

SY35U

**MACHINERY  
SPECIALISTS  
LIMITED**

**SANY**

Quality Changes the World



# A POWERFUL LIGHTWEIGHT

COMPACT. FLEXIBLE. VERSATILE.

CONSTRUCTION MACHINERY



**MINI EXCAVATORS**  
**SY35U**

Engine  
Yanmar 3TNV88F  
Rated power  
18.2 kW / 2200 rpm  
Bucket capacity  
0.12 m<sup>3</sup>  
Operating mass  
3790 kg



# SANY

## For challenging tasks, you need a first-class partner

Quality comes from experience. And from new ideas. This is why we combine these two crucial factors at SANY. This is because we are one of the leading producers, having sold more than **450 000** excavators **worldwide**. This means that you can always rely on sophisticated products that have been tried and tested in practice. An impressive **5–7%** of our annual turnover is dedicated to research and development. This is why we give you not only our word, but also our extraordinary **five-year warranty** as a guarantee of how powerful and robust our products are.

# 450 000

EXCAVATORS SOLD  
**WORLDWIDE**

# 5–7%

TURNOVER FOR RESEARCH  
AND DEVELOPMENT

# FIVE-YEAR WARRANTY\*

Quality Changes the World

\* Applicable in certain markets, please check with your local dealer.

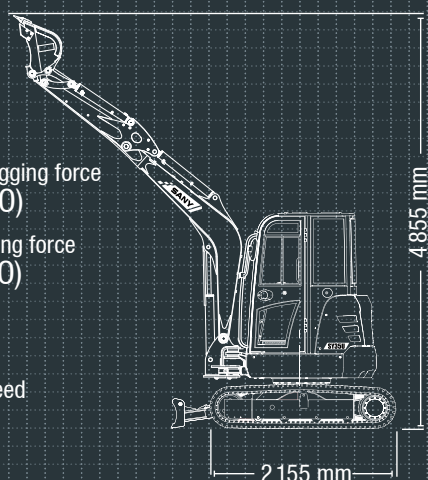
## SY35U HARD FACTS

Max. bucket digging force  
30.4 kN (ISO)

Max. arm digging force  
18.2 kN (ISO)

Swingspeed  
10 rpm

Max. travel speed  
4.2 km/h





# SANY SY35U – The New Generation of Compact Power

**SY35U**

The upgraded SANY SY35U has been developed to meet the high expectations of the European and American markets, fully compliant with T4F/EU V emission standards. Designed for outstanding performance in urban municipal projects, road maintenance, hillside works, and forestry applications, this new-generation excavator combines efficiency, comfort, and reliability like never before.

The latest generation introduces a range of enhancements that take performance and operator comfort to new heights. A standard floating blade allows for smoother, more precise grading and leveling across varied terrain - with the option for a Tilt Angle blade, while the auxiliary UMC proportional control system ensures finely tuned hydraulic flow and current control for seamless attachment operation. The air conditioning system has been optimized with improved ducting for better airflow and all-day comfort. Inside the cab, a high-back mechanical shock-absorbing seat reduces the SIP height for greater stability and delivers exceptional comfort during long hours of operation.

Compact yet powerful, refined yet rugged — the new SY35U embodies SANY's commitment to continuous improvement and operator-focused innovation. It's the smart, future-ready choice for those who demand more from every machine.





## ECONOMY

# LESS IS MORE – AT LEAST IN TERMS OF OPERATING COSTS

The SY35U is a smart investment that delivers returns from day one. A true all-rounder, it's built for long-term performance, reliability, and productivity. Equipped with advanced technology throughout, it's designed to maximise efficiency and profitability on every job.



## QUALITY

Robust and durable – the most important protective elements and reinforcements as well as all access panels parts are made of high-quality metal, ideal for tough use in the construction industry.



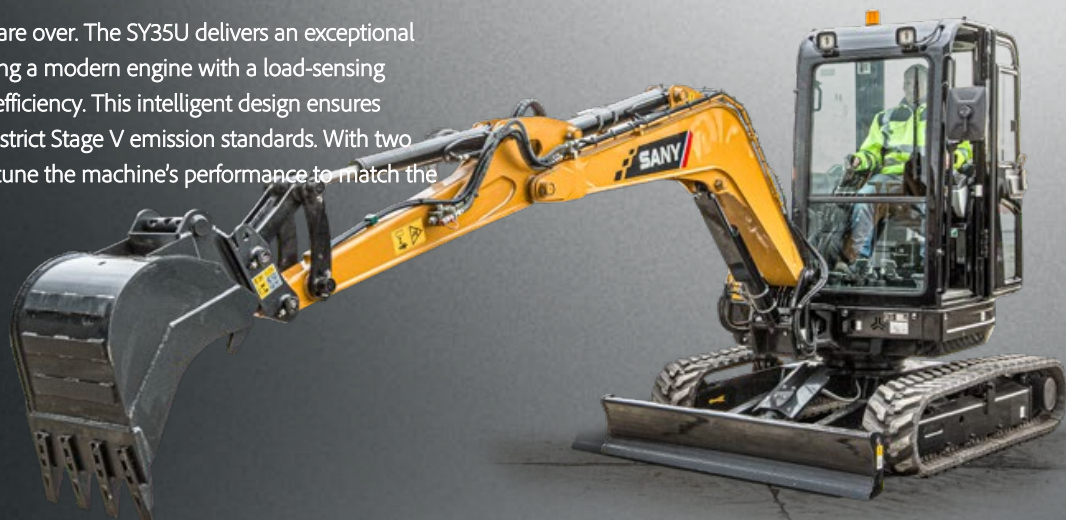
## SAFETY

No compromise – the standard safety valves on the arm and boom also ensure safe use during lifting operations. That is our added advantage when it comes to safety.

## ECONOMY

### Efficiency or performance? Why should you have to choose?

The days of sacrificing efficiency for performance are over. The SY35U delivers an exceptional balance of power and cost-effectiveness, combining a modern engine with a load-sensing hydraulic system that adjusts flow for maximum efficiency. This intelligent design ensures remarkably low fuel consumption while meeting strict Stage V emission standards. With two selectable work modes, operators can easily fine-tune the machine's performance to match the demands of any job.





## DIMENSIONS

Compact and powerful – on the one hand a short-tail-swing excavator with small dimensions, on the other hand a small powerhouse that offers exceptional performance in its category. For quick and efficient work even in confined circumstances. The extra option of the additional counterweight combined with the long arm gives the excavator an increased range with added stability.

## USER EXPERIENCE

Extremely comfortable – from easy access to the comfortable seat and the ergonomically designed controls, the driver can look forward to maximum comfort. The Bluetooth radio with integrated hands-free control further improves comfort.



## COMPONENTS

Quality as standard – the SY35U already comes with extensive features as standard. This can be upgraded with additional special options and adapted to individual requirements.

## ECONOMY

Economically impressive – with low fuel consumption, straightforward maintenance, low investment costs, the SY35U offers an impressive price-performance ratio in every respect. The two auxiliary control circuits and the hydraulic preparation of the quick-coupler line offer the ideal pre-equipment for almost all work and applications.

## Absolute reliability – for peace of mind!

SANY's five-year warranty\* gives you the assurance that you can fully count on your equipment.



\* Key component warranty

## QUALITY

### Fully resilient – metal covers

Durability and robustness are standard features on all SANY mini excavators. For example, panels are made of metal. This makes them particularly robust – and if an accident happens during the tough everyday work on a construction site, it can usually be straightened out again quickly. Furthermore, all maintenance access points are lockable and thus offer additional protection for the interior.





# EFFICIENCY, COST-EFFECTIVENESS AND USER EXPERIENCE



## USER EXPERIENCE

### Maintenance and servicing made easy

Maintenance and inspections are effortless with SANY's smart service design. All key components are accessible from ground level, ensuring work can be carried out quickly, safely, and efficiently. Large, wide-opening bonnets provide easy access to all service points, while the centralised lubrication system supplies multiple bearings from one location. For example, the entire slewing ring can be conveniently lubricated through a dedicated access point in the upper structure — keeping your SY35U running smoothly with minimal downtime.

## USER EXPERIENCE

# FOCUS ON DRIVER COMFORT

The all-new SY35U cab has been thoughtfully redesigned for enhanced comfort and practicality. It features a high-back, mechanical shock-absorbing seat that lowers the SIP height, reducing fatigue and making operation more comfortable over long shifts. Fully adjustable armrests adapt to any operator, while advanced vibration dampers minimise shocks and working movements. Ergonomically arranged controls ensure smooth and efficient operation.

Adding to the premium experience, the cab includes a modern USB/Bluetooth radio and a large central display that clearly shows all critical machine information. Operators can monitor operating modes, travel speed, attachments, and even upcoming maintenance schedules, keeping them in full control while maximising efficiency.



## USER EXPERIENCE

### Operator comfort is key

The standard air conditioning system is a real novelty in its class, so that the driver always keeps a cool head.

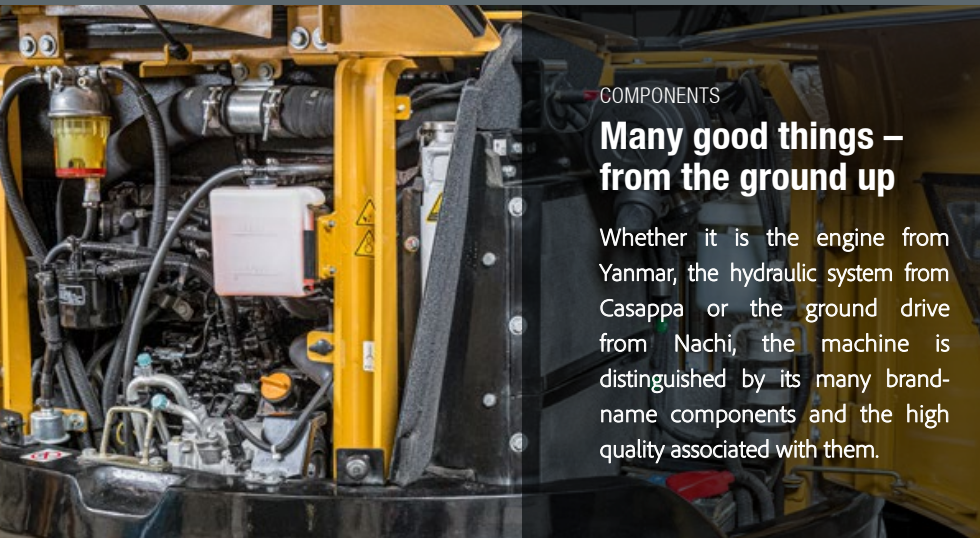
## ECONOMY

### Comprehensive and versatile

The hydraulic preparation of the quick-coupler line and the two proportional auxiliary lines enable easy adaptation to the various attachments. The safety valves are already included in the standard offering.







## COMPONENTS

### Many good things – from the ground up

Whether it is the engine from Yanmar, the hydraulic system from Casappa or the ground drive from Nachi, the machine is distinguished by its many brand-name components and the high quality associated with them.

### Our highlights – the added benefits SANY offers you:

- + 2 proportional auxiliary line on joystick as standard
- + Double acting circuit for hydraulic quick coupler with piping
- + Safety valves on arm and boom
- + Air conditioning
- + LED working lights
- + Efficient, powerful load-sensing hydraulic system
- + Triple flange drive rollers
- + Bluetooth/USB radio

## SAFETY

### What is important must be protected

Safety for people and machines is ensured here not only by warning devices such as the standard rotating warning beacon and the travel alarm. The boom cylinder is also protected by a metal guarding, which prevents major damage to the cylinder. The safety valves on the arm and boom are also included as standard, and guarantee safe lifting operations.



## Precision and Versatility with the Optional Tilt Blade

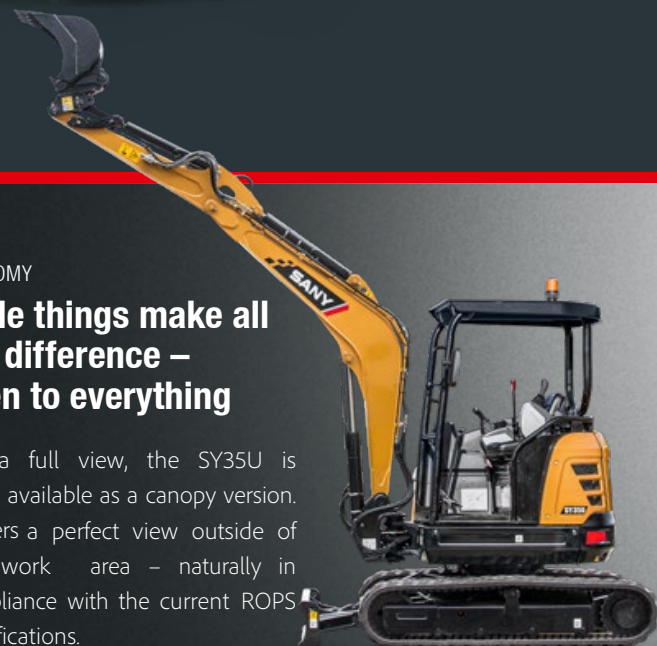
The optional tilt blade enhances the SY35U's versatility, allowing operators to shape, grade, and contour with precision, even on uneven or sloped terrain. By adjusting the blade angle hydraulically, operators can complete complex tasks more efficiently without frequent repositioning. The result is smoother, more accurate finishes and increased productivity across every job site.



## ECONOMY

### Little things make all the difference – open to everything

For a full view, the SY35U is also available as a canopy version. It offers a perfect view outside of the work area – naturally in compliance with the current ROPS specifications.





# TECHNICAL SPECIFICATIONS

## ENGINE

Model	YANMAR 3TNV88F
Typ	Water-cooled, 4 cylinder, diesel engine with turbulence chamber fuel injection
Exhaust emissions	Stage V
Rated power	18.2 kW / 2 200 rpm
Max. torque	91.4 Nm / 1 320 rpm
Displacement	1 642 ccm
Batteries	1 × 12 V / 80 Ah

## HYDRAULIC SYSTEM

Mainpump	Variable displacement axial piston pump
Max. oilflow	88 l/min
Travelmotor	Variable displacement axial piston motor
Rotation device	Axial piston motor
Max. oilflow (AUX1)	45 l/min

## SERVICE REFILL CAPACITIES

Fuel tank	50 l
Engine coolant	6.5 l
Engine oil	6.7 l
Drive (per side)	0.7 l
Hydraulicsystem	55 l
Hydraulic oil tank	40 l

## PERFORMANCE

Swingspeed	10 rpm
Max. travel speed	High 4.5 km/h, slow 2.4 km/h
Max. travel force	42.5 kN
Gradeability	30°
Bucket capacity	0.12 m³
Groundpressure	0.32 kg/cm²
Bucket digging force ISO	30.4 kN
Arm digging force ISO	18.2 kN

## UNDERCARRIAGE AND UPPER STRUCTURE

Boom length	2 540 mm
Arm length	1 400 mm / 1 650 mm optional
Bottomrollers	4
Rotation device	Axial piston motor with planetary gear running in oil bath and single-row slewing ring. Spring-loaded slewing gear parking brake, hydraulically released.
Undercarriage	Reinforced undercarriage with larger dimensions. Welded drive frame in box design made of special material. Side frame welded to the drive frame.





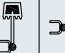


## RELIEF VALVE SETTINGS

Implement circuit	245 bar
Swing circuit	206 bar
Travel circuit	245 bar
Pilot pressure	35 bar








## OPERATING MASS

SY35U	3790 kg
-------	---------

## LIFTING CAPACITIES OF LOWER DOZER BLADE\*

 Load point height	Radius				Digging reach	
	2.0 m		3.0 m		4.0 m	
						
4.0 m kg						803 660
3.0 m kg				818 503		688 458
2.0 m kg			1 000 762	855 491		667 386
1.0 m kg			1 447 703	1 036 468		695 364
Ground line kg			1 650 669	1 137 452		787 371
-1.0 m kg	2 372 1 245	1 631 665	1 082 451			999 431
-2.0 m kg	2 057 1 287	1 217 691				1 023 620

## LIFTING CAPACITIES OF UPPER DOZER BLADE\*

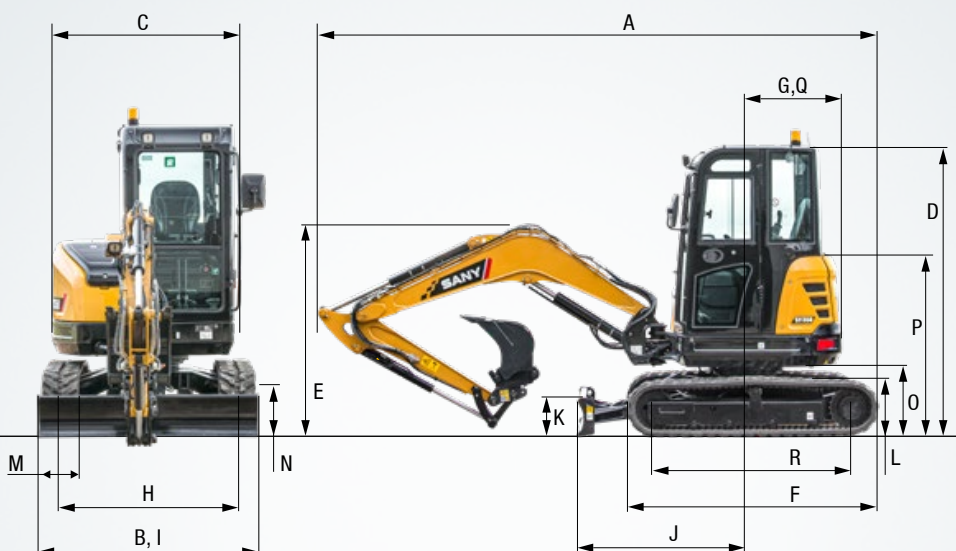
 Load point height	Radius				Digging reach	
	2.0 m		3.0 m		4.0 m	
						
4.0 m kg						704 660
3.0 m kg				534 503		486 458
2.0 m kg			817 762	522 491		411 386
1.0 m kg			755 703	499 468		387 364
Ground line kg			720 669	482 452		398 371
-1.0 m kg	1 377 1 245	717 665	482 451			459 431
-2.0 m kg	1 423 1 287	743 691				665 620

\*for standard arm with 1400 mm



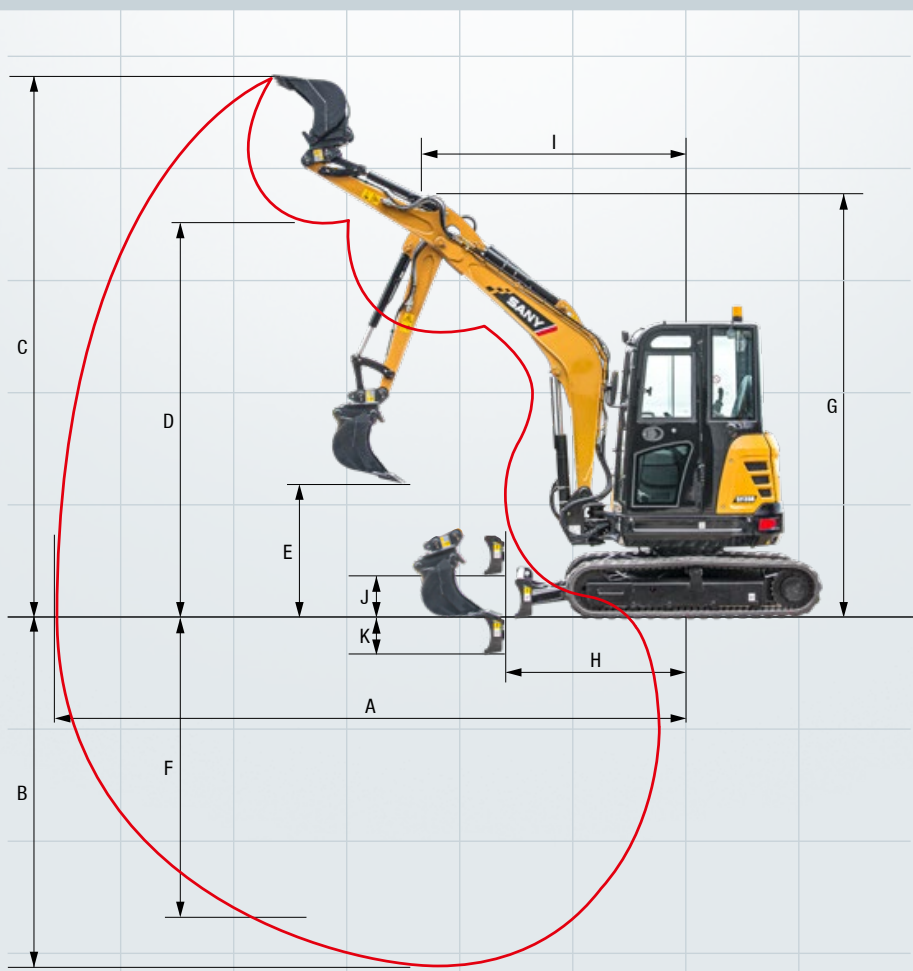
## DIMENSIONS (TRANSPORT)

A	Transport length	4905 mm
B	Transport width	1720 mm
C	Overall width of upper structure	1548 mm
D	Height over cabin/ROPS	2515 mm
E	Height of Boom – transport	1800 mm
F	Overall length of crawler	2155 mm
G	Tail length	860 mm
H	Track gauge	1420 mm
I	Undercarriage width (blade)	1720 mm
J	Horizontal distance to blade	1500 mm
K	Blade height	350 mm
L	Track height	520 mm
M	Track pads width	300 mm
N	Min. ground clearance	295 mm
O	Counterweight clearance	560 mm
P	Engine cover height	1550 mm
Q	Tail swing radius	860 mm
R	Center distance of tumblers	1670 mm



## WORKING AREA

A	Max. digging reach	5465 mm
B	Max. digging depth	3115 mm
C	Max. digging height	4865 mm
D	Max. dumping height	3440 mm
E	Min. dumping height	1210 mm
F	Max. vertical digging depth	2640 mm
G	Overall height over arm by min. swing radius	3690 mm
H	Arm head distance with work equipment retracted as far as possible	1955 mm
I	Swing radius by max. boomswing (L)	2245 mm
	Swing radius by max. boomswing (R)	2140 mm
	Min. swing radius	2475 mm
J	Max. clearance when blade up	375 mm
K	Max. depth of blade down	370 mm
L	Offset boom (L)	645 mm
	Offset boom (R)	725 mm
	Max. boom-swing angle (L)	57°
	Max. boom-swing angle (R)	63°





## The SY35U – already well equipped with high-quality features as standard

Efficient, focused work starts with the right machine — and the SY35U delivers virtually everything you could need.



### OPERATORS COMFORT / CABIN

Mechanical suspension seat	●
Air conditioning & heater system	●
USB/Bluetooth/Radio/Control display screen	●
Armrests (adjustable)	●
12v outlets	●
Wiper	●
ROPS/FOPS Cabin	●
AUX 1 on joystick	●
AUX 2 on joystick	●
8 stored hydraulic settings for attachments	●

### SAFETY

Battery master switch	●
Beaconlamp	●
Lockable hoods	●
Emergency lowering	●

### HYDRAULIC SYSTEM

Swing brake	●
2 speed travel	●
Hydr. Pre-pressure operating joysticks	●
Mainfilter	●
Hydraulic Quick Hitch line	●

### WORKING LIGHTS

Lights front (LED)	●
Lights - boom (LED)	●

Standard equipment ● Special option ●

The standard and special options differ depending on the country in which the crawler excavator is delivered. If you have any questions, please contact your dealer directly. \* The air conditioner contains fluorinated greenhouse gases: Refrigerant type: HFC-134a, Global warming potential: 1 430, Quantity: 0.625 kg, CO<sub>2</sub>e: 0.89 t

### UNDERCARRIAGE

Rubber tracks	●
Cylinder guards – dozer blade	●
Holes/loops for fixing	●

### ENGINE/ENGINE COMPARTMENT

Auto idle	●
Ground level E-stop	●
Dehydr. for fuelsystem	●
Cage or storage for grease gun	●

### WORKING EQUIPMENT

Boom and arm load holding valves with overload indicator	●
Double acting circuit for hydraulic quick coupler with piping	●
Breaker&Shear line proportional on joystick with piping	●
Rotation line proportional on joystick with piping	●
Flow adjustment for attachments	●
Dozer blade with float function	●
Cylinder guards – boom	●
Additional counterweight	●
1.65 m long arm	●
Blade safety valve	●
Dozer Blade with tilt function	●

## Parts supply – quick and reliable

With the purchase of a SANY mini excavator you have made an investment in the future. Fast availability of spare parts is your guarantee of minimal downtimes and failure times.





# A SERVICE YOU CAN RELY ON

In the event of a breakdown during your warranty period, Vertu will come to your site as soon as possible to get your machine back up and running.

## National Service Representation

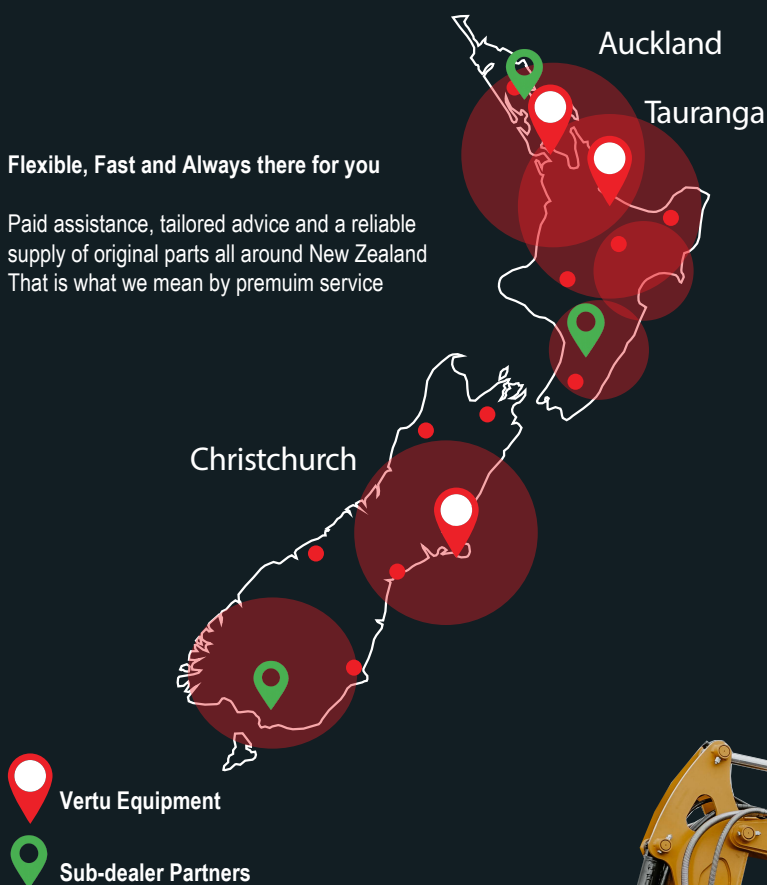
Our national service network partnerships provide certainty that you are supported with service and parts, wherever you are located.

## Parts and Inventory

As the dealer of SANY excavators, roading and construction equipment Vertu holds a significant inventory of SANY Genuine and aftermarket parts and attachments, both in New Zealand and Australia to keep you going. With direct relationships locally and internationally we can source parts quickly and as a matter of priority.

## Flexible, Fast and Always there for you

Paid assistance, tailored advice and a reliable supply of original parts all around New Zealand. That is what we mean by premium service.



## Detailed information in black and white

Handbooks and documents are available for all SANY mini excavators, and these can help you with operation, maintenance, servicing and repairs. These include operating and maintenance instructions and technical specifications.



## The added benefits SANY offers you:

- + Fast supply thanks to central SANY Oceania parts hub
- + More than 15,000 spare parts to make your machine highly reliable
- + Expert knowledge for optimal supply for your machine
- + Thanks to SANY's special training programme, our technicians are always kept up-to-date so that they can face all technical challenges.







# THE LITTLE ONE WHO OVERCOMES BIG THINGS

Precise results and reliable high performance, getting down to work even in confined spaces – the SY35U offers everything you expect from a mini excavator. It is robust, easy to use and, thanks to its excellent performance data, suitable for all types of excavation work.

## ROBUST AND DURABLE

The most important protective elements and reinforcements as well as all cladding parts are made of robust metal. Robot-manufactured weld seams guarantee a long service life under all conditions.

## EXTREMELY COMFORTABLE

Impressively simple control thanks to the large display and the various working modes – combined with the comfort of an air conditioning system.

## NO COMPROMISE

In order to provide the best possible protection for both people and machines, devices such as cylinder guard plates are already integrated. It goes without saying that the platform is FOPS/TOPS certified.

## COMPACT POWER

In its performance class, the SY35U is an outstanding powerhouse with the small dimensions of a short-tail swing excavator. The swivel bracket further increases flexibility.

## ECONOMIC

The low fuel consumption in compliance with Stage 5, the intelligent load-sensing hydraulic system and the option of purchasing the SY35U as a canopy are all impressive as a complete package with an excellent price-performance ratio.

## QUALITY AS STANDARD

High-quality components from brand manufacturers guarantee top performance and a high level of operational safety – also for the extensive standard equipment, which includes several LED work lights.

## TECHNICAL HIGHLIGHTS

Engine	YANMAR 3TNV88F
Rated power	18.2 kW / 2 200 rpm
Max. torque	91.4 Nm / 1 320 rpm
Max. travel speed	4.5 km/h
Swingspeed	10 rpm
Mainpump	CASSAPA
Max. oilflow	88 l/min

Not all products are available in all markets. As part of our continuous improvement process, we reserve the right to modify specifications and designs without giving prior notice. The figures may contain additional options.



Machinery Specialists  
06 356 8459  
[www.machineryspecialists.co.nz](http://www.machineryspecialists.co.nz)  
[info@machineryspecialists.co.nz](mailto:info@machineryspecialists.co.nz)

18 Bisley Street  
Palmerston North

**MACHINERY  
SPECIALISTS  
LIMITED**