

**MACHINERY
SPECIALISTS
LIMITED**

SANY



IMPRESSIVE EFFECTIVENESS

HIGH POWER. LOW CONSUMPTION.

CONSTRUCTION MACHINERY



CRAWLER EXCAVATOR
SY365H

Engine
ISUZU 6HK1XDHAG-01-C3
Power
212 kW / 2000 rpm
Bucket capacity
1.6 m³
Operating weight
37 100 kg

SANY

SY365H

The most demanding tasks require a first-class partner.

Quality comes from experience. And from innovative ideas. That's why at SANY we combine these two important factors. Because we are one of the leading manufacturers, with more than **500,000** excavators sold **worldwide**. Given this, you can trust our advanced products, tested in the construction field. We allocate a high percentage of our annual turnover, between **5 and 7%**, to research and development. This allows us to promise you the power and robustness of our products.

500 000
EXCAVATORS SOLD
WORLDWIDE

5-7%

PERCENTAGE OF TURNOVER ALLOCATED
TO RESEARCH AND DEVELOPMENT

Quality Changes the World

SY365H TECHNICAL DATA

Max. breakout force
of the bucket
235 kN (ISO)

Max. pulling force
of the arm
180 kN (ISO)

Rotational speed
9.5 rpm

Maximum travelling speed
5.5 km/h



A POWERFUL MACHINE THAT DELIVERS PRODUCTIVITY AND NEW DIMENSIONS

With the SY365H crawler excavator, SANY offers a powerful ally that proves its worth when it comes to moving huge loads. It is equipped to deliver a long service life and long operating times, even in the toughest working conditions.

The new SY365H is a solid all-rounder for heavy-duty work. With its slightly reduced weight and moderate width of 3 metres, it exhibits superb agility for its class. Large earthworks and comprehensive public works projects can be carried out quickly and efficiently with it.



KEY FEATURES



COMPONENTS

WELL-DESIGNED COOLING

To prevent the engine from overheating even at maximum power, easily accessible radiators with a powerful fan have been installed, whose speed is electronically regulated depending on the temperature. The integrated silicon oil clutch ensures that it only starts when really necessary. This saves fuel, reduces noise levels and minimises emissions.

DIMENSIONS

Stability in any situation

If you are looking for the right grip in the relentless activity of construction work, you need optimum structural stability. The perfect basis for this is the stable HD undercarriage. It is able to unleash its impressive power without limits thanks to its low centre of gravity and well-thought-out balance. The solid double-supported carrier rollers ensure that the chain drive remains clean even after long periods of operation. In addition, the crossbars in the cavities of the carrier wheel allow it to remain stable even under the toughest conditions, so that additional wear is not a concern.



CONSTRUCTION

Reliable: new high-strength castings at maximum load points reduce load stress and improve durability. For example, thanks to the lower chain track inlet protection, it is perfectly equipped for demolition and quarrying.

EASE OF USE

As pleasant as it is productive: the completely redesigned cab offers outstanding operating comfort thanks to its superb air-suspension seat, additional adjustment options and integrated control panel. Improved cab sealing and the new ventilation system with adjustable vents make the driver's comfort comparable to that of a car.

DIMENSIONS

A stable base: the heavy-duty undercarriage offers high stability in any situation. It is equipped as standard with triple chain protection and double bearings on the support wheels. The best conditions for maximum service life, even with continuous use.



SAFETY

SAFETY DOWN TO THE SMALLEST DETAIL

A rear and side camera are included as standard equipment. The high-resolution monitor can display the images from the cameras individually or in various combinations. This provides a precise picture of the surroundings for maximum safety. In low-light conditions, six maintenance-free LED headlights provide optimum illumination. Similarly, the standard equipment includes lashing eyes for safe transport and a maintenance platform with non-slip flooring and secure handrails, as well as an emergency descent. The latter allows the equipment to be lowered in the event of a drive unit failure.

The impressive safety features are complemented by an optimised design and a ROPS/FOPS Class II certified cab. In addition, Class 2 certified protective grilles protect people and the machine on stony ground or during demolition work.



SAFETY

Everything in view: a rear camera and a side camera, fitted as standard, together with LED headlights enable safe working with the best panoramic view. The images can be displayed individually or combined on the high-resolution 10" screen. The new, particularly flat bonnet design also allows a clear view to the rear.

COMPONENTS

Maximum efficiency: the powerful Isuzu engine is equipped with an exhaust gas module without cooled gas recirculation. In addition to a 50% reduction in installation space and a 30% weight saving, this ensures maximum combustion temperature and thus maximum efficiency with high fuel economy and 20% more torque.

PROFITABILITY

Maximum productivity: select the optimum operating mode depending on the application and choose between high power or minimum fuel consumption. Incredible productivity is also the result of great flexibility. Two additional proportional control circuits and switching of auxiliary devices via the touchscreen are also included as standard.

CONSTRUCTION

Because quality matters

Crawler excavators are high-performance machines and must prove their worth every day in demanding construction site conditions. That is why we take no risks when it comes to quality.

Robot-controlled welding and a high-quality pipe system for the hydraulic lines ensure that you can rely completely on your SANY. Thanks to its all-metal plating, minor damage can be repaired in most cases.

EASE OF USE

A CABIN THAT MEETS THE HIGHEST STANDARDS

The completely redesigned cab has been designed with great attention to detail to enable safe and fatigue-free working. With its complex insulation, it offers excellent protection against noise, dust and vibrations, creating a comfortable and pleasant working environment. The cab impresses with its high-quality comprehensive equipment. The air-suspended driver's seat with heating and numerous adjustment options is the centrepiece. It enables fatigue-free working and ensures safe and precise operation thanks to its integrated control panel.

Comfort is enhanced by features such as increased legroom, automatic climate control and optimised air intake in the cab air filter. Other standard features include a radio with USB connection and generous storage space, with an integrated refrigerator and cup holder.



Our key features. The advantages of SANY Plus:

- + Completely remodelled driver's cab with Class II ROPS/FOPS certification
- + Large 10" high-resolution touchscreen
- + 2 cameras providing a 270° field of view
- + Seat with integrated adjustable consoles
- + 2 additional control circuits
- + Programmable auxiliary devices
- + Automatic switching of the hydraulic system when operating with a hammer
- + Heavy-duty undercarriage
- + High-power engine



EASE OF USE

Success during maintenance is guaranteed.

Inspection and maintenance work ensures the power and service life of the machine. For this reason, we simplify the user's tasks as much as possible. The hydraulic oil indicator, main battery switch, air filter, liquid container for the washing system and fuse boxes are easily and safely accessible from the ground. The lubrication bench allows for quick and convenient lubrication of different points in one operation, and the well-designed filter arrangement on the right-hand side of the machine facilitates both checks and maintenance.

EASE OF USE

Large and practical

The 10" touchscreen gives users quick and secure access to the most important information and machine parameters at all times. This information includes high-resolution images from the two standard cameras. Pressure and volume settings for up to 10 auxiliary devices can also be quickly controlled, including automatic machine diagnostics and maintenance intervals. Simple handling, intuitive menu navigation and the option to select the language prevent operating errors. Incidentally, the 10" touchscreen also works reliably when wearing gloves.



RENTABILIDAD

FLEXIBILITY AT THE TOUCH OF A BUTTON

The preparation for the hydraulic quick coupler is included as standard and is integrated into the operating concept. Both control circuits allow individual adjustments to be made. The desired parameters can be saved for the various work tools and accessed at any time. For greater ease of operation and faster tool changes, the crawler excavator has been equipped with a new multi-way valve.

The changeover from hammer to shear hydraulic systems can also be conveniently operated from the cab thanks to an electronically controlled valve. This means that everything is ready for a quick and complete hydraulic changeover.



PROFITABILITY

Maximise power, minimise consumption

The water-cooled six-cylinder engine provides the power needed to deliver perfect, continuous grip in excavations, quarries or demolition sites. What's more, it not only meets the requirements of Stage III emissions standards, but is also extremely fuel-efficient and quiet.



ENGINE

Model	ISUZU 6HK1XDHAG-01-C3
Type	Water-cooled, 6 cylinders
Emission standards	Stage III
Power	212 kW / 2 000 rpm
Maximum torque	1 080 Nm / 1 500 rpm
Displacement	7 790 ccm
Batteries	2 x 12 V / 120 Ah

HYDRAULIC SYSTEM

Main pump	2 electronically controlled axial piston pumps
Max. oil flow	2 x 316 l/min
Drive	Variable axial piston motor
Swivel motor	Axial piston motor
Max. oil flow (AUX1)	550 l/min

PRESSURE RELIEF VALVES

Boom circuit	343 bar
Power amplifier (Powerboost)	373 bar
Swing circuit	300 bar
Travel circuit	343 bar
Pilot circuit	39 bar

SERVICE FILLING QUANTITIES

Fuel tank	646 l
Engine coolant	28 l
Engine oil	36 l
Travel drive (per side)	8.5 l
Hydraulic system	–
Hydraulic oil tank	380 l
Coolant (R134a – GWP: 1430)	–
CO ₂ e	–

POWER

Swing speed	9.5 rpm
Maximum travel speeds fast, slow	5.5 km/h, 3.5 km/h
Maximum traction force	320 kN
Lifting capacity	35°
Bucket capacity	1.6 m³
Ground pressure	0.65 kg/cm²
Maximum bucket breakout force ISO	235 kN
Maximum arm traction force ISO	180 kN






OPERATING WEIGHT

Operating weight	37 100 kg
------------------	-----------

UNDERCARRIAGE AND SUPERSTRUCTURE

Boom length	6 500 mm
Arm length	2 900mm
Rollers	9
Support rollers	2
Swivel system	Planetary gear driven by axial piston motor, hydraulically operated automatic parking brake

LIFTING CAPACITIES*

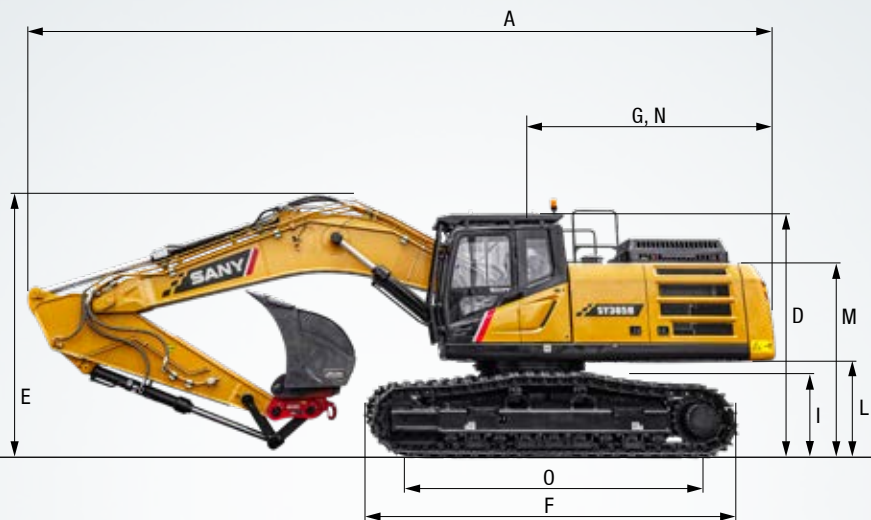
Loading point height	Radius				Maximum range						
	3.0 m	4.5 m	6.0 m	7.5 m	Capacity		mm				
											
7.5 m kg	7445 7445 7508 7508 7651										
6.0 m kg	7838 7838 7674 7674 7723 7322 8523										
4.5 m kg	11274 11274 9313 9313 8386 8386 7958 6583 9061										
3.0 m kg	14855 14855 11028 11028 9281 8384 8215 6203 9326										
1.5 m kg	17214 15870 12456 10851 10093 8122 8497 6084 9340										
Floor line kg	17899 15543 13244 10561 10601 7937 8809 6211 9106										
- 1.5 m kg	15981	15981	17531	15505	13318	10454	10642	7861	9150	6646	8601
- 3.0 m kg	22155	22155	16347	15648	12638	10508	9971	7921	9513	7591	7773
- 4.5 m kg	18794	18794	14113	14113	10852	10750			9851	9728	6494

* With chain plate width of 600 mm

DIMENSIONS

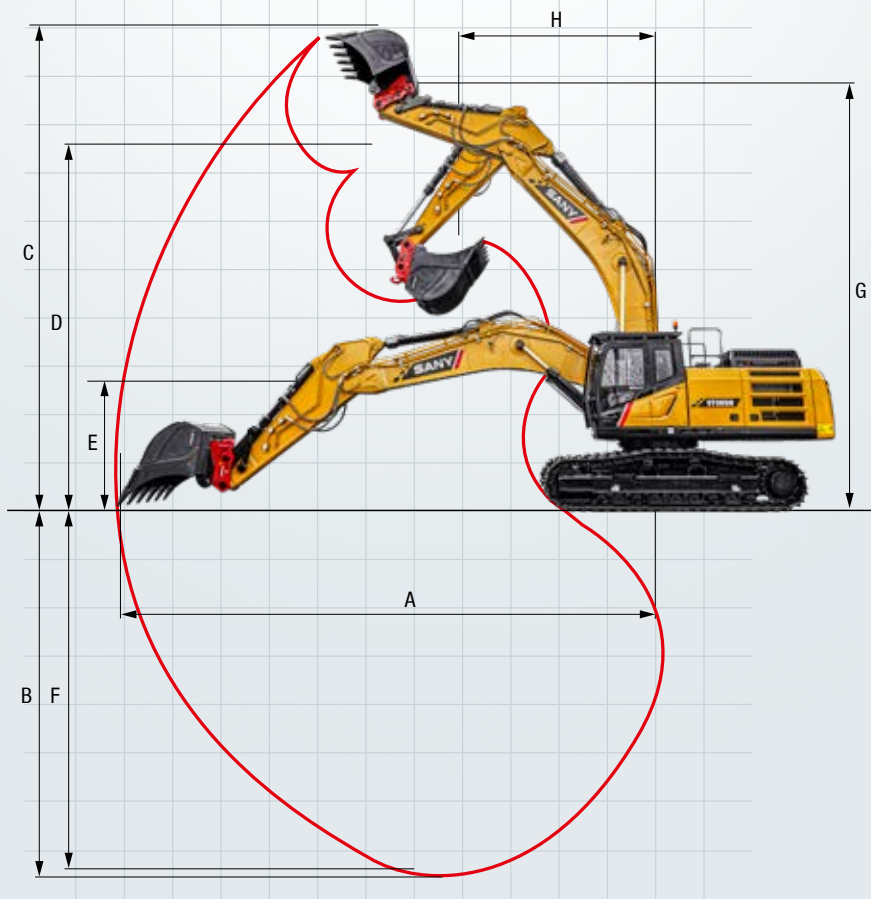
A Overall length	11 530 mm
B Overall width *	3 190 mm
C Overall width of superstructure	2 986 mm
D Overall height above cab	3 320 mm
E Overall height of boom	3 545 mm
F Length of undercarriage	5 065 mm
G Rear length	3 070 mm
H Wheelbase	2 390 mm
I Track height	1 080 mm
J Track plate width	600 mm
K Minimum ground clearance	550 mm
L Counterweight ground clearance	1 250 mm
M Engine bonnet height	2 760 mm
N Turning radius	3 070 mm
O Distance (centre) between track wheel and guide wheel	4 140 mm

* With chain plate width of 600 mm



WORK AREA

A Max. reach	10 780 mm
B Max. digging depth	7 050 mm
C Max. lift height	10 570 mm
D Max. dump height	6 920 mm
E Min. dump height	2 413 mm
F Max. digging depth vertical wall	7 050 mm
G Total height with min. turning radius	9 085 mm
H Min. turning radius	4 495 mm



Note: Non-binding information document. The values indicated are theoretical maximum values. The values for the high-pressure water pump are for operation in diesel mode. Specifications subject to change without prior notice. Photos and illustrations are for illustrative purposes only. For information on available options, please consult us.



With numerous extras included as standard

This powerful machine comes equipped with many extras as standard. From the comfortable driver’s cab to the automatic hydraulic system switchover, it makes everyday use more efficient and safer.

EASY TO OPERATE / CAB

Automatic climate control	●
Radio with speaker	●
Adjustable armrests	●
12 V connection	●
USB connection (music)	●
Air suspension seat	●
Heated seat	●
Sunroof	●
Integrated cooling compartment	●
10" touchscreen	●
ROPS/FOPS cab with front protection	●
Rubber mat	●

WORK EQUIPMENT

Safety valves on boom and arm	●
Double-acting hydraulic circuit for quick coupling, including pipe system	●
Hammer installation	●
Rotation circuit on control lever, including pipe system	●
Part installation	●
Adjustable oil flow for auxiliary devices	●
Adjustable oil pressure for auxiliary devices	●

UNDERCARRIAGE

600 mm double-wall panels	●
600 mm triple-wall panels	●
Fastening rings	●

WORK LIGHTING

LED work light, front roof	●
LED work light, boom	●
LED work light, platform	●
LED work light, rear roof	●

ENGINE COMPARTMENT

Automatic speed adjustment	●
Refuelling pump	●
DPF	●
DOC	●

HYDRAULIC SYSTEM

Swing brake	●
2 travel speeds	●
Pipes for additional control circuit 1	●
Pipes for additional control circuit 2	●
Hydraulic servo control of the control lever	●

SAFETY

Battery disconnect switch	●
Tilt alarm	●
Omnidirectional lights	●
Camera (rear)	●
Camera (right)	●
Handrail	●
Lockable covers	●
Lockable fuel tank cap	●

Standard equipment ● Special option ●

Note: Non-binding information document. The values indicated are theoretical maximum values. Specifications subject to change without prior notice. The photos and illustrations are for illustrative purposes only. For information on available options, please consult us.
* The air conditioning contains fluorinated greenhouse gases. Refrigerant type: HFC-134a, global warming potential: 1,430, quantity: 0.9 kg, C02e: 1.29 t

A SERVICE YOU CAN RELY ON

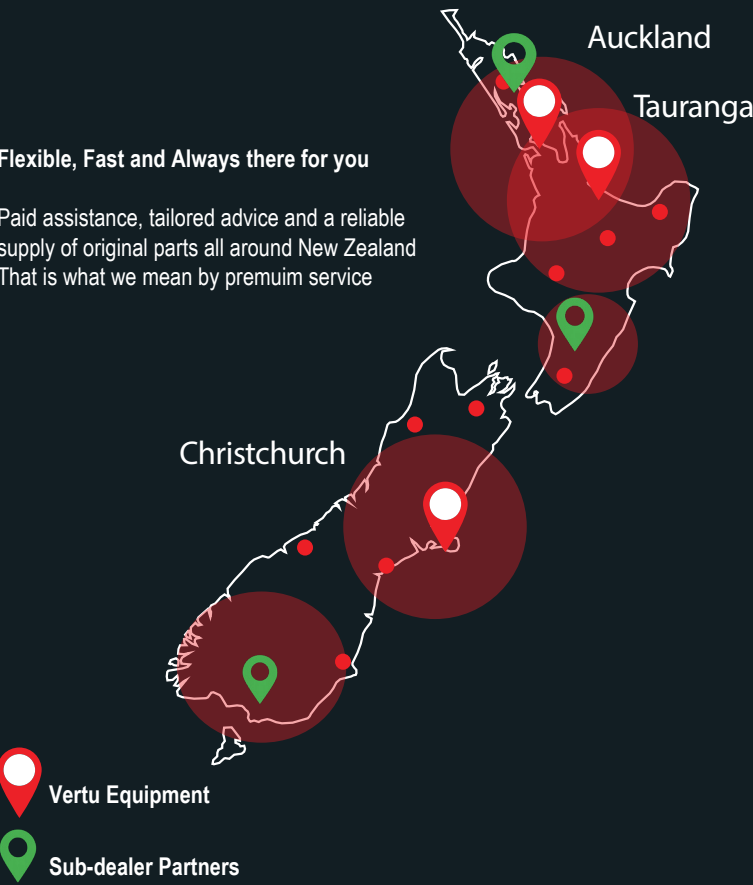
In the event of a breakdown during your warranty period, Vertu will come to your site as soon as possible to get your machine back up and running.

National Service Representation
Our national service network partnerships provide certainty that you are supported with service and parts, wherever you are located.

Parts and Inventory
As the dealer of SANY excavators, roading and construction equipment Vertu holds a significant inventory of SANY Genuine and aftermarket parts and attachments, both in New Zealand and Australia to keep you going. With direct relationships locally and internationally we can source parts quickly and as a matter of priority.

Flexible, Fast and Always there for you

Paid assistance, tailored advice and a reliable supply of original parts all around New Zealand That is what we mean by premium service



The advantages of SANY Plus:

- + Experienced dealer network throughout Australia, New Zealand & the Pacific Islands
- + Direct service coverage
- + Local SANY team dedicated to your success
- + Australia-wide parts distribution centers to ensure SANY machines are fully supported
- + Ongoing customer care from purchase to after-sales

Parts supply: fast and reliable

By purchasing a SANY compact excavator, you have invested in the future. The rapid availability of spare parts guarantees short down-times and minimal inactivity.



Full coverage, black on white

All SANY mini excavators come with manuals and documents to assist you with operation, maintenance, servicing, and repairs, including operating and maintenance instructions, technical specifications, and more.



KEY FEATURES **SY365H**

STRENGTH AND FLEXIBILITY



High efficiency and surprising flexibility: this is how you invest sustainably in your company's leadership. For this reason, we paid special attention to durability and reliability during the development phase. We also focused on user needs, to enable them to work without fatigue and with precision.

STABLE BASE

The HD undercarriage not only guarantees stability in challenging tasks, but also provides the basis for maximum service life and performance.

AS COMFORTABLE AS IT IS PRODUCTIVE

The redesigned cab is designed to feel good. Improved ergonomics, clear organisation of the controls and a comfortable, individually adjustable seat with integrated control panels make this workplace a place to feel good.

ALWAYS ON THE SAFE SIDE

The arm of the bucket and the boom are designed to offer maximum lifting capacity. The areas that are most heavily loaded during daily construction work have been manufactured as high-strength castings. This reduces the load stress and extends the service life.

EVERYTHING AT A GLANCE

Two cameras are installed so that the driver always has a clear view of their entire working environment. The display shows high-resolution images, either individually or combined. The new flat bonnet and the new counterweight that completes the bonnet further optimise visibility.

OPTIMISED EFFICIENCY

It unleashes its great power at work. The Isuzu diesel engine and Kawasaki's powerful hydraulic system also tackle the toughest challenges and combine dynamics, precision and endurance.

MAXIMUM PRODUCTIVITY

Flexibility is evident when it comes to preparing for new tasks. Choose the optimum operating mode for different tasks: high power or minimum fuel consumption. Two additional proportional control circuits as standard allow for exemplary flexibility with different auxiliary devices.

KEY TECHNICAL FEATURES – SY365H

Engine	ISUZU 6HK1XDHAG-01-C3
Power	212 kW / 2 000 rpm
Maximum torque	1 080 Nm / 1 500 rpm
Maximum travel speed	5.5 km/h
Rotational speed	9.5 rpm
Axial main pump	2 electronically controlled piston adjustment pumps
Maximum oil flow	2× 316 l/min



“PRECISE AND POWERFUL”

Manu – Ets FRADET France

Not all products are available in all markets. As part of our ongoing improvement process, we reserve the right to change specifications and designs without prior notice. Images may contain additional options.



Machinery Specialists
06 356 8459
www.machineryspecialists.co.nz
info@machineryspecialists.co.nz

18 Bisley Street
Palmerston North

**MACHINERY
SPECIALISTS
LIMITED**