

SY500H

**MACHINERY
SPECIALISTS
LIMITED**

SANY



HIGH PERFORMANCE

PRODUCTIVITY. SAFETY. PROFITABILITY.

CONSTRUCTION MACHINERY



CRAWLER EXCAVATOR
SY500H

Engine
ISUZU 6WG1XDHAG-03-C3
Power
300 kW / 1 800 rpm
Bucket capacity
2.5 m³
Operating weight
49 500 kg

SANY

The most demanding tasks require a first-class partner.

Quality comes from experience. And from innovative ideas. That's why at SANY we combine these two important factors. Because we are one of the leading manufacturers, with more than **500,000** excavators sold **worldwide**. Given this, you can trust our advanced products, tested in the construction field. We allocate a high percentage of our annual turnover, between **5 and 7%**, to research and development. This allows us to promise you the power and robustness of our products.

500 000
EXCAVATORS SOLD
WORLDWIDE

5–7%

PERCENTAGE OF TURNOVER ALLOCATED
TO RESEARCH AND DEVELOPMENT

Quality Changes the World



SY500H

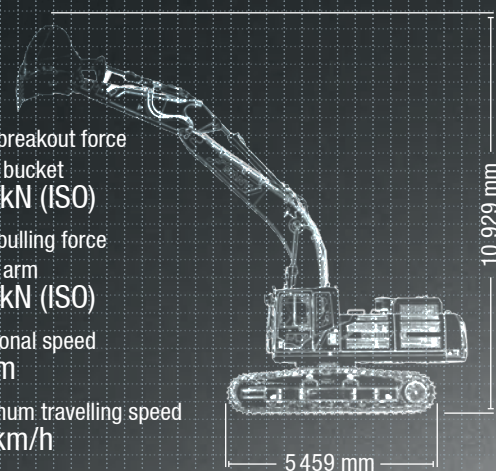
SY500H TECHNICAL DATA

Max. breakout force
of the bucket
287 kN (ISO)

Max. pulling force
of the arm
245 kN (ISO)

Rotational speed
8 rpm

Maximum travelling speed
5,4 km/h



HIGH ACTIVITY

The SANY SY500H has been developed to tackle demanding tasks quickly and safely. It is perfect for locations where a lot of material needs to be moved in a short time. Thanks to its balance of power and precision, it is exactly the right workhorse for cost-oriented use on construction sites. On all major construction sites, it guarantees that extensive earthworks can be carried out cost-effectively in a short time. It is perfectly equipped for demanding use in harsh environments, with a stable undercarriage, high stability in all components and a powerful drive.



KEY FEATURES

CONSTRUCTION

HIGH RESISTANCE

Whether it's quarrying or gravel extraction, when it comes to moving large quantities of material, machines are subjected to extreme stress. As a robust powerhouse, the SY500H meets all expectations in terms of quality and durability. For example, with high-quality steel, whose precise computer-controlled weld seams are meticulously monitored. Or with safety valves that you can rely on 100% in an emergency.

COMPONENTS

Maximum power, maximum productivity

The high-volume Isuzu engine delivers the desired performance at all times. This saves time and money on the job site. And the perfect coordination of the hydraulic system, engine and equipment ensures the highest level of fuel efficiency and productivity.

SY500H

DIMENSIONS

Better support, more transmissible power

The SY500H has an extremely stable and robust frame. Its large support surface provides the basis for the operator to work safely and precisely, even on uneven ground, and offers the best support properties, enabling optimum use of power.

EASE OF USE

Productivity centre: power is useless without control. That is why the comfortable and spacious driver's cab is designed so that all controls are within easy reach and the displays are easy to read.

PROFITABILITY

Always the right power: digging, loading, moving... Every task places special demands on the machine. Thanks to the intelligent selection of operating modes, you can always optimally adjust the SY500H's components in terms of fuel consumption and performance.

CONSTRUCTION

For the toughest conditions: the SY500H is characterised by its great strength and resistance and has been designed from the ground up to deliver high performance even in the most adverse conditions. And all this for the long term.

SAFETY

Proven stability: in addition to the glazed driver's cab, the standard rear camera ensures an excellent panoramic view without blind spots. The cab structure, reinforced in accordance with ROPS/FOPS specifications, guarantees a safe working environment for the machine operator.

COMPONENTS

Top quality: with a displacement of almost 16 litres, the Isuzu engine provides the basis for high productivity. The engine's high torque at low revs delivers superior performance and guarantees lower fuel consumption.

DIMENSIONS

Solid foundation: the robust chassis is designed down to the last detail to offer maximum stability and reliability. Even in the toughest working conditions, the high-quality structure guarantees continuous operating times and a long service life.

EASE OF USE

ERGONOMIC CAB AS A PRODUCTIVITY FACTOR

The driver’s cab receives special attention in the SY500H. It combines safety and ergonomic factors with the aim of providing the driver with the best conditions for pleasant and fatigue-free work. The focus is on the comfortable heated driver’s seat with air suspension, comfortable backrest and easily accessible controls.

Joystick control allows for precise operation in any situation, and the large display clearly summarises all important parameters. The powerful heating system and automatic air conditioning ensure the best possible temperature. It is also equipped as standard with: radio and 12 V socket, plenty of storage space and storage compartments.



PROFITABILITY

Productivity at the touch of a button

Preselectable working modes make it easy to achieve an optimum balance between performance and fuel economy. And this for every task. This prevents a reduction in engine speed and thus performance, as well as uneconomical high engine speeds. It ensures faster and more efficient work. And it protects components and thus extends service life.



Our key features. The advantages of SANY Plus:

- + Comfortable cab
- + Comprehensive safety package, including camera
- + Driver’s seat with air suspension
- + Powerful, high-volume engine
- + Automatic heating and air conditioning

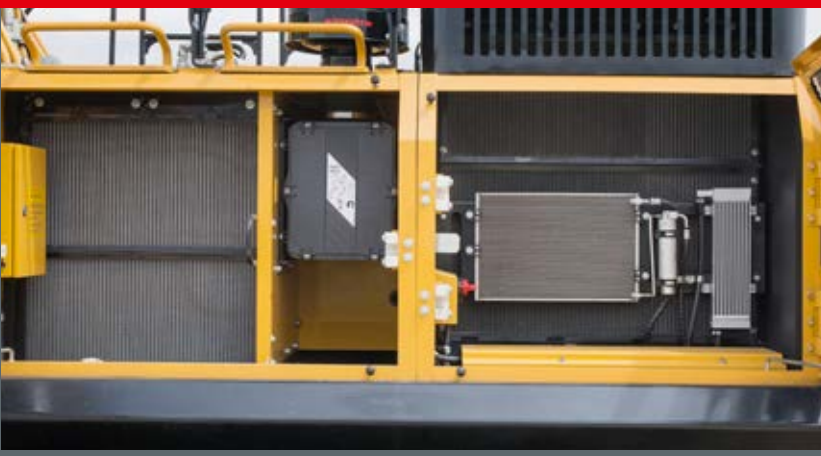


EASE OF USE

Large valve and much more besides

Service and maintenance are essential for maintaining performance and productivity. But that doesn’t mean you have to spend a lot of time on these tasks. That’s why the powerful engine of the SY500H is easily accessible under the large engine bonnet in the superstructure. Here, all the important engine parts for maintenance and service can

be accessed quickly and safely. The other components that need to be checked and serviced regularly are easily accessible through large maintenance covers. This makes maintenance and servicing quick and easy, saves operating costs and increases machine availability.



PROFITABILITY

GREATER POWER OF MOTION

You can rely on the water-cooled six-cylinder engine with common rail injection in every respect, not only in terms of reliability and power, but also in terms of fuel consumption. Reduced fuel consumption thanks to the latest SCR exhaust technology not only lowers operating costs but also reduces emissions. The two axial piston control pumps ensure a maximum oil flow of twice 360 litres per minute. The hydraulic pump capacity always automatically adapts to the energy actually required.



MOTOR

Model	ISUZU 6WG1XDHAG-03-C3
Type	Water-cooled, 6 cylinders, common rail
Emission standards	Stage III
Power	300 kW / 1 800 rpm
Maximum torque	1 932 Nm / 1 400 rpm
Displacement	15 681 cc
Batteries	2 × 12 V / 200 Ah

HYDRAULIC SYSTEM

Main pump	2 x axial piston pump with electronic control
Max. oil flow	2 × 360 l/min
Drive	Variable axial piston motor
Swivel motor	Axial piston motor

PRESSURE RELIEF VALVES

Boom circuit	343 bar
Power amplifier	373 bar
Swing circuit	269 bar
Travel circuit	343 bar
Pre-control circuit	39 bar

SERVICE FILLING QUANTITIES

Fuel tank	680 l
Engine coolant	28.6 l
Engine oil	50 l
Travel drive (per side)	15 l
Hydraulic system	46.3 l
Hydraulic oil tank	480 l

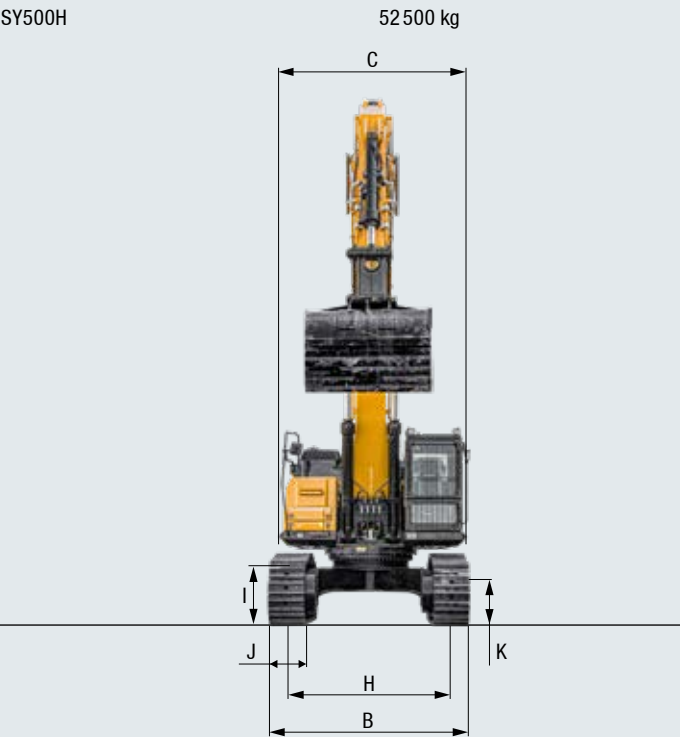
POWER

Rotation speed	8 rpm
Maximum travel speed	Fast 5.4 km/h, slow 3.1 km/h
Maximum traction force	339 kN
Bucket capacity	2.5 m³
Ground pressure	0.753 kg/cm²
Climbing ability	35°
ISO bucket breakout force	287 kN
ISO arm traction force	245 kN

LOWER AND UPPER BODY

Boom length	7 000 mm
Arm length	3 000 mm
Roller	9
Support rollers	2
Swivel system	Planetary gear driven by axial piston motor, hydraulically operated automatic parking brake

OPERATING WEIGHT

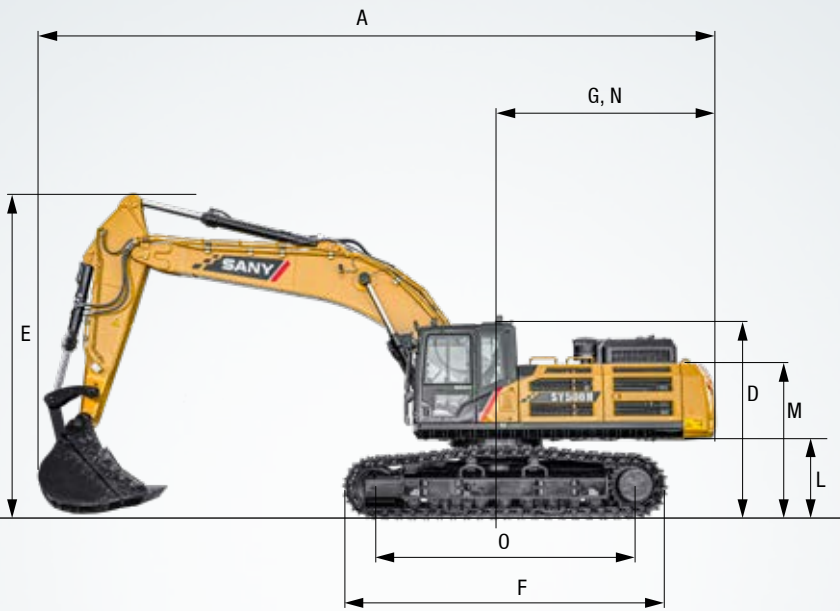


LOAD CAPACITIES

Loading point height	Radius				
	3.0 m	4.5 m	6.0 m	7.5 m	9 m
6.0 m kg				11 055	11 055
4.5 m kg		18 642	18 642	14 279	12 192
3.0 m kg		23 570	19 988	16 675	16 435
1.5 m kg		16 257	16 257	18 626	12 724
Floor line kg		20 366	20 366	19 732	12 327
-1.5 m kg	15 054	15 054	26 578	18 598	19 928
-3.0 m kg	25 395	25 395	24 999	18 849	19 161
-4.5 m kg	29 297	29 297	22 004	17 031	12 629

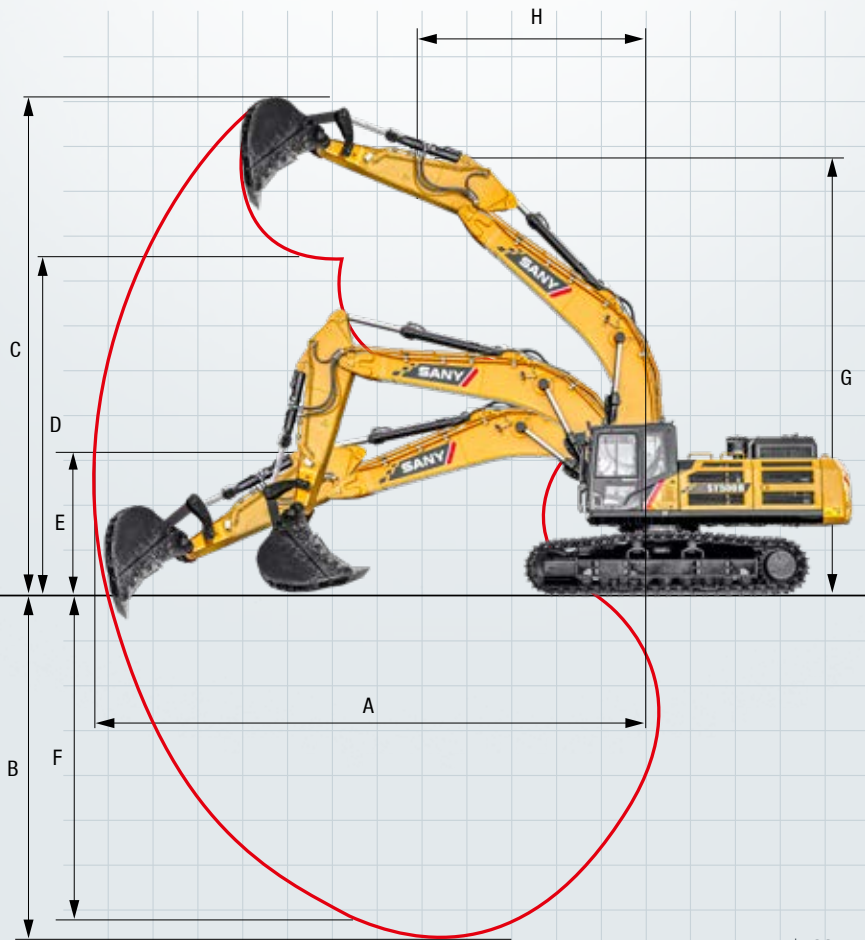
DIMENSIONS

A Overall length	12 280 mm
B Overall width	3 470 mm
C Overall width of upper body	3 292 mm
D Overall height of cab	3 476 mm
E Overall height of boom	3 850 mm
F Total length of lower body	5 440 mm
G Rear length	3 765 mm
H Wheelbase	2 740 mm
I Chain height	1 220 mm
J Chain plate width	600 mm
K Min. ground clearance	560 mm
L Rear weight ground clearance	1 355 mm
M Bonnet height	2 995 mm
N Rear turning radius	3 765 mm
O Distance (centre) between sprocket and steering wheel	4 415 mm



WORK AREA

A Maximum reach	11 860 mm
B Maximum digging depth	7 490 mm
C Maximum cutting height	10 950 mm
D Maximum dumping height	7 450 mm
E Minimum dumping height	2 833 mm (3 350 mm ARM)
F Maximum digging depth, vertical wall	5 660 mm
G Total height with minimum turning radius	9 100 mm
H Minimum turning radius	5 240 mm



Note: Non-binding information document. The values indicated are theoretical maximum values. The values for the high-pressure water pump are for operation in diesel mode. Specifications subject to change without prior notice.

The photos and illustrations are for illustrative purposes only. For information on available options, please contact us.

Full force

The SY500H not only impresses with its performance. It also demonstrates its superiority in terms of equipment. Everything you would expect from a 50-tonne excavator comes as standard.



EASY TO OPERATE / CAB

Heating	●
Automatic climate control	●
Radio with loudspeaker	●
Adjustable armrests	●
Seat with air suspension	●
Heated seat	●
Windscreen wipers	●
Windscreen washer system	●
Additional control circuit 1 on control lever	●
Additional control circuit 2 on control lever	●
Removable front window	●
Sunroof	●
Integrated cooling compartment	●

WORK EQUIPMENT

Safety valve on boom and arm with overload indicator	●
Double-acting hydraulic circuit for quick coupling incl. hose system	●
Hammer installation	●
Attachment installation	●
Adjustable oil flow for accessories	●

LOWER BODY

600 steel chain	●
Fastening rings	●

Standard equipment ● Special option ●

Note: Non-binding information document. The values indicated are theoretical maximum values. Specifications subject to change without prior notice.
The photos and illustrations are for illustrative purposes only. For information on available options, please consult us.
* The air conditioning contains fluorinated greenhouse gases: Refrigerant type: HFC-134a, Global warming potential: 1,430, Quantity: 0.625 kg, C02e: 0.89 t

WORK LIGHTING

LED work light, front roof	●
LED work light, boom	●
LED work light, platform	●

ENGINE

Automatic speed adjustment	●
Diesel particulate filter	●
DOC	●

HYDRAULIC SYSTEM

Swing brake	●
2 travel speeds	●
Tubes for additional control circuit 1	●
Tubes for additional control circuit 2	●
Hydraulic servo control of the control lever	●
Main filter	●

SAFETY

Battery disconnect switch	●
Motion alarm	●
Omnidirectional lights	●
Camera	●
Handrail	●
Lockable covers	●
Lockable fuel tank cap	●

A SERVICE YOU CAN RELY ON

In the event of a breakdown during your warranty period, Vertu will come to your site as soon as possible to get your machine back up and running.

National Service Representation

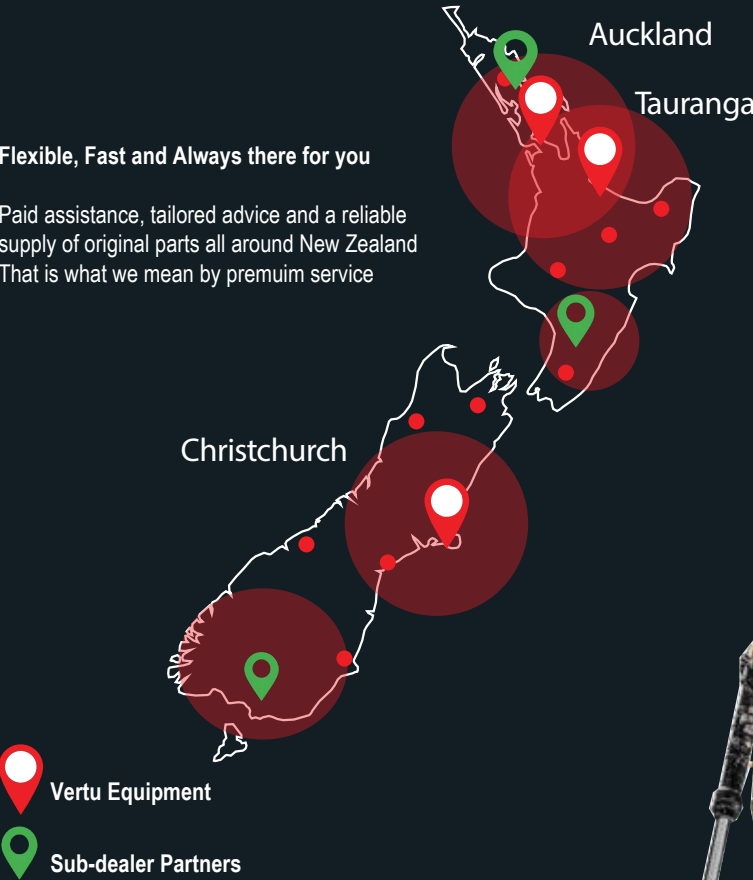
Our national service network partnerships provide certainty that you are supported with service and parts, wherever you are located.

Parts and Inventory

As the dealer of SANY excavators, roading and construction equipment Vertu holds a significant inventory of SANY Genuine and aftermarket parts and attachments, both in New Zealand and Australia to keep you going. With direct relationships locally and internationally we can source parts quickly and as a matter of priority.

Flexible, Fast and Always there for you

Paid assistance, tailored advice and a reliable supply of original parts all around New Zealand That is what we mean by premuim service



The advantages of SANY Plus:

- Experienced dealer network throughout Australia, New Zealand & the Pacific Islands
- Direct service coverage
- Local SANY team dedicated to your success
- Australia-wide parts distribution centers to ensure SANY machines are fully supported
- Ongoing customer care from purchase to after-sales

Parts supply: fast and reliable

By purchasing a SANY compact excavator, you have invested in the future. The rapid availability of spare parts guarantees short down-times and minimal inactivity.



Full coverage, black on white

All SANY mini excavators come with manuals and documents to assist you with operation, maintenance, servicing, and repairs, including operating and maintenance instructions, technical specifications, and more.



KEY FEATURES **SY500H**

HIGH PERFORMANCE

Profitability is a simple calculation: maximum productivity at the lowest cost. In this regard, the SY500H is a true genius at arithmetic. It stands out for its efficient way of working. Or in other words: high performance and low fuel consumption. Durability and low investment costs. Availability and low maintenance.

FOR THE TOUGHEST CONDITIONS

The SY500H is designed to deliver maximum performance reliably even in difficult locations. It achieves this with great success thanks to its **robust structure** and **high-quality welds**. Another sign of superior stability and durability: the **sophisticated layout of the hydraulic system**.

SOLID BASE

Stability isn't everything. But without it, everything else is useless. That's why the running gear is particularly **stable**.

PRODUCTIVITY CENTRE

The driver's cab is very **spacious** and **comfortably** equipped for productive and concentrated working. In addition, there is exemplary protection **against noise and vibrations**.

COMPLETE PROTECTION

Safety begins at the entrance: with **stable handrails and non-slip steps**. Other features of the safety package: **improved panoramic view, camera and safety valves**.

REAL POWER PACKAGE

Efficient productivity at its best: the **high-volume Isuzu engine** leaves no doubt that it can complete even the most demanding tasks quickly and safely. Its proven **common rail technology** delivers **exemplary** high torque and therefore enables economical fuel consumption.

ALWAYS THE RIGHT FORCE

With the SY500H, there are many ways to achieve efficiency: A **high-performance engine** that surprises with its fuel consumption. The intelligent choice of **working modes** for optimum engine performance at all times. A **powerful and efficient hydraulic system**. This minimises operating costs and maximises savings.

KEY TECHNICAL FEATURES

Engine	ISUZU 6WG1XDHAG-03-C3
Power	300 kW / 1 800 rpm
Maximum torque	1 932 Nm / 1 400 rpm
Maximum travel speed	5.4 km/h
Rotational speed	8 rpm
Main pump	2 x axial piston control pump with electronic regulation
Maximum oil flow	2 x 360 l/min



"A MACHINE THAT HAS EVERYTHING!"

Joël Launnay – Machine operator at SAS VALTINÉE

Not all products are available in all markets. As part of our ongoing improvement process, we reserve the right to change specifications and designs without prior notice. Images may contain additional options.



Machinery Specialists
06 356 8459
www.machineryspecialists.co.nz
info@machineryspecialists.co.nz

18 Bisley Street
Palmerston North

**MACHINERY
SPECIALISTS
LIMITED**