

**MACHINERY  
SPECIALISTS  
LIMITED**

**SANY**



**COMPACT EXCAVATOR**  
**SY60U**

**Engine:**

Yanmar 4TNV98C

**Gross Power:**

42.4 kW

**Operating Weight:**

6 300 KG

**Max Digging Depth:**

3 990 mm



# SANY

## For challenging tasks, you need a first-class partner

Quality comes from experience. And from new ideas. This is why we combine these two crucial factors at SANY. This is because we are one of the leading producers, having sold more than **450 000** excavators **worldwide**. This means that you can always rely on sophisticated products that have been tried and tested in practice. An impressive **5–7%** of our annual turnover is dedicated to research and development. This is why we give you not only our word, but also our extraordinary **five-year warranty** as a guarantee of how powerful and robust our products are.

# 450 000

EXCAVATORS SOLD  
**WORLDWIDE**

# 5–7%

TURNOVER FOR RESEARCH  
AND DEVELOPMENT

# FIVE-YEAR WARRANTY\*

Quality Changes the World

\* Applicable in certain markets, please check with your local dealer.



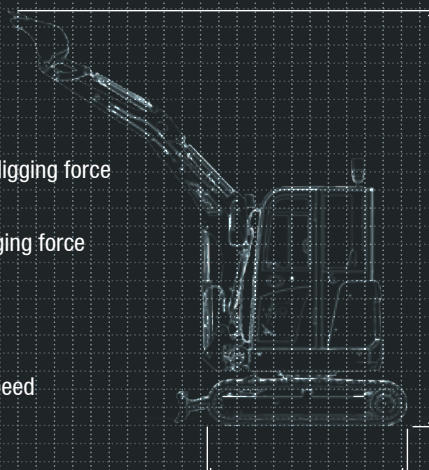
## HARD FACTS

Max. bucket digging force  
**49.1 kN**

Max. arm digging force  
**34.0 kN**

Swingspeed  
**10 RPM**

Max. travel speed  
**3.8 km/hr**







# BIG PERFORMANCE IN A COMPACT PACKAGE.

The SANY SY60U delivers exceptional performance where space is limited. Its minimum tail swing design allows operators to work confidently and efficiently in tight urban environments, roadside projects, and confined construction sites - all without compromising on power or stability.

Perfect for urban development, utility maintenance, landscaping, and hillside work, the SY60U offers excellent maneuverability and visibility, reducing the risk of collision and improving overall site safety. Operators benefit from a short rear swing radius that allows the machine to rotate freely in narrow spaces, making it ideal for work alongside walls, buildings, and traffic.

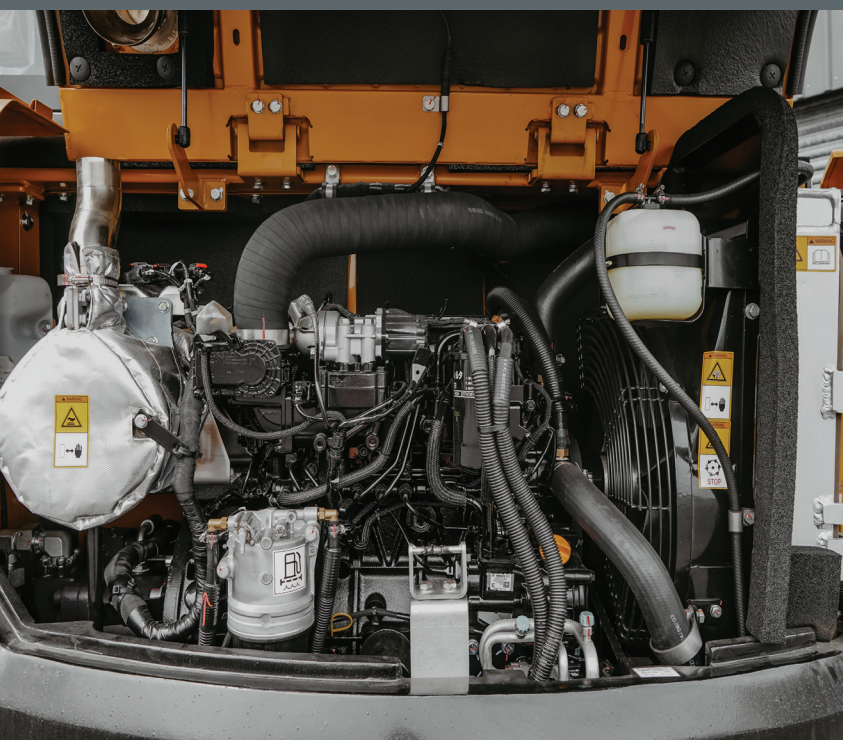
With its compact footprint and robust stability, the SY60U provides the flexibility to tackle detailed tasks and heavy duty jobs alike - offering unmatched control, comfort, and confidence in every operation.



# FOR PRECISE PERFORMANCE – CONTROL MADE SIMPLE.

The new SY60U combines intelligent design with advanced efficiency. Its load-sensing hydraulic system delivers smooth, precise control and faster cycle times while reducing fuel consumption and overall operating costs.

Engineered for performance and savings, the SY60U helps operators achieve more with every movement – maximising productivity without compromise.



## Absolute reliability – for peace of mind!

SANY's five-year warranty\* gives you the assurance that you can fully count on your equipment.

\* Key Component Warranty

## STABILITY YOU CAN COUNT ON.

The SANY SY60U comes standard with a heavy duty counterweight, giving the machine outstanding balance and stability – even when lifting or operating at full reach. This added weight improves digging precision, lifting capacity, and overall safety, especially when working on uneven terrain or in confined areas.

Whether handling heavy attachments or tackling demanding tasks, the SY60U stays steady, secure, and ready for anything.







## REACH FURTHER. WORK SMARTER.

You won't hit your limits with the SANY SY60U. Its robust boom and arm design and well-balanced weight distribution deliver a maximum reach of 6,375 mm and a digging depth of 3,990 mm, giving operators exceptional versatility across all applications. The minimum tail swing structure ensures confident, efficient operation even in confined spaces — perfect for urban construction, roadwork, and utility projects.

### DIMENSIONS.

The SANY SY60U thrives where space is limited. Its short tail swing design allows smooth, confident operation in narrow areas—perfect for urban sites, roadsides, and confined worksites. Compact yet powerful, it keeps productivity high where every centimeter counts.

### USER EXPERIENCE.

The SY60U makes servicing simple with a wide opening engine hood and easy access to key components. Daily checks are quick and convenient, while the Bluetooth/USB system keeps operators comfortable and connected.

### COMPONENTS.

Powered by a proven Yanmar 4TNV98C engine, delivering strong, reliable power in every environment. Paired with a Kawasaki hydraulic pump, it ensures smooth performance and consistent efficiency - even in the toughest conditions.



### SAFETY.

Equipped with comprehensive safety features as standard — including safety valves on the boom and arm, a battery master switch, lockable covers, and beacon lighting. The ROPS/FOPS certified cabin provides maximum protection and peace of mind in every operation.

### COST EFFECTIVE.

The SY60U's smart control system automatically adjusts pump output to match engine power - delivering optimal efficiency, smooth performance, and lower fuel consumption on every job.

### OPERATOR COMFORT.

Its low-noise cab and efficient air-conditioning system create a quiet, cool working environment, while ergonomic controls and a 7-inch touchscreen display make operation intuitive and effortless.



# A FOCUS ON THE OPERATOR.

The SANY SY60U is designed with the operator in mind, combining comfort and practicality to support long, productive days on the job. The spacious, low-noise cab features air conditioning and a warm air system for year-round comfort, while ergonomically arranged controls and a 7-inch touchscreen display make operation smooth and intuitive. A mechanical suspension seat, rearview camera, and excellent visibility reduce fatigue and enhance focus. With Bluetooth/USB connectivity built in, the SY60U keeps operators both comfortable and connected throughout every shift.

## DISPLAY AND CONTROL SYSTEM.

You have everything in view with the large 7-inch touchscreen display, which clearly presents all key operating data in an easy-to-read format. Beyond essential machine information, the interface allows operators to adjust attachment settings, manage power modes, and even schedule upcoming maintenance directly through the menu. The intuitive layout makes operation seamless, keeping you in control with just a few taps.



## PRECISION IN YOUR HANDS.

The SY60U puts total control right where it belongs — at your fingertips. Its ergonomic joysticks offer smooth, proportional control of all machine movements and auxiliary functions, giving operators precise handling in even the tightest spaces. Every switch and lever is logically positioned for intuitive use, reducing fatigue and improving efficiency throughout the workday. The push-to-start button adds a modern touch, allowing quick, effortless ignition and a seamless start to every shift.





## CLEAR VISIBILITY FOR COMPLETE CONTROL.

A clear view of the worksite is essential for accuracy and safety — and the SY60U delivers just that. Its spacious cab and large front, side, and rear windows provide excellent all-around visibility, allowing operators to monitor every movement without leaving their seat. A rearview camera enhances safety and awareness when maneuvering in confined areas, while the high intensity LED work lights ensure clear vision in low light conditions with minimal energy use and long service life.



### Our highlights – the added benefits SANY offers you:

- + 2 proportional auxiliary lines with joystick control as standard
- + Case-Drain Line Installed
- + Double acting circuit for hydraulic quick-coupler with piping
- + Safety valves on arm and boom
- + Triple flange drive rollers
- + LED working lights
- + Bluetooth/USB radio

## READY FOR ANY ATTACHMENT.

The SANY SY60U is equipped for versatility and precision on any job site. It comes standard with two proportional auxiliary hydraulic lines, allowing operators to connect and control a wide range of attachments with ease. Both pressure and flow can be adjusted directly from the cab for smooth, responsive operation - Ideal for powering attachments such as breakers, augers, and tilt buckets, with continuous flow capability as standard — making it perfectly suited for mulchers and mowers.

A dedicated hydraulic quick-hitch line enables fast, safe attachment changes, while the case drain line protects hydraulic motors from excess back pressure, extending attachment life and improving overall reliability. The result? A compact excavator that's ready for any task, any time.





# TECHNICAL SPECIFICATIONS

## ENGINE

|                   |   |
|-------------------|---|
| Model             | Yanmar 4TNV98C-WSY  |
| Type              | 4-cylinder, 4-stroke, water-cooled, direct injection, naturally aspirated |
| Exhaust emissions | Stage V   |
| Gross power       | 42.2 kW   |
| Net Power         | 41.1 kW   |
| Displacement      | 3.32 L  |

## HYDRAULIC SYSTEM

|                          |                              |
|--------------------------|------------------------------|
| Main Pump                | Rexroth Axial Piston         |
| Max. oilflow             | 148 l/min                    |
| Operating Pressure       | 27 MPa                       |
| Auxiliary Flow (max)     | 90 l/min / 60 l/min          |
| Auxiliary Pressure (max) | 25 MPa                       |
| Travel Motor             | Axial Piston with Park Brake |

## SERVICE REFILL CAPACITIES

|                |       |
|----------------|-------|
| Fuel tank      | 85 l  |
| Engine coolant | 13 l  |
| Engine oil     | 8.5 l |
| Hydraulic Tank | 105 l |
| Engine Oil     | 8.5 l |

## PERFORMANCE

|                          |                              |
|--------------------------|------------------------------|
| Swing Speed              | 10 rpm                       |
| Max. travel speed        | High 3.8 km/h, slow 2.2 km/h |
| Max. travel pressure     | 27 MPa                       |
| Travel Effort (max)      | 30 kN                        |
| Gradeability             | 30°                          |
| Bucket digging force ISO | 49.1 kN                      |
| Arm digging force ISO    | 34 kN                        |

## OPERATING MASS

|       |         |
|-------|---------|
| SY60U | 6300 kg |
|-------|---------|

## UNDERCARRIAGE AND UPPER STRUCTURE

|               |         |
|---------------|---------|
| Boom length   | 3000 mm |
| Dipper length | 1700 mm |

## LIFTING CAPACITIES OF LOWER DOZER BLADE

| Load point height | Radius                       |           |           |      | Max reach |      |
|-------------------|------------------------------|-----------|-----------|------|-----------|------|
|                   | 20 m                         | 30 m      | 40 m      | 50 m | Capacity  |      |
| 4.0 m kg          | 1150 1150                    |           |           |      | 1120      | 1030 |
| 3.0 m kg          | 1250 1250 1300 860           |           |           |      | 1060      | 835  |
| 2.0 m kg          | 2020 1690 1175 1175 1390 840 |           |           |      | 1080      | 750  |
| 1.0 m kg          | 2890 1640 1100 1100 1540 810 |           |           |      | 1150      | 715  |
| 0 m kg            | 3290 1570 1070 1070 1650 790 |           |           |      | 1320      | 735  |
| -1.0 m kg         | 2720 2720                    | 3260 1560 | 1050 1050 |      | 1660      | 720  |
| -2.0 m kg         | 4000 3030                    | 2880 1580 | 1070 1070 |      | 1800      | 1020 |

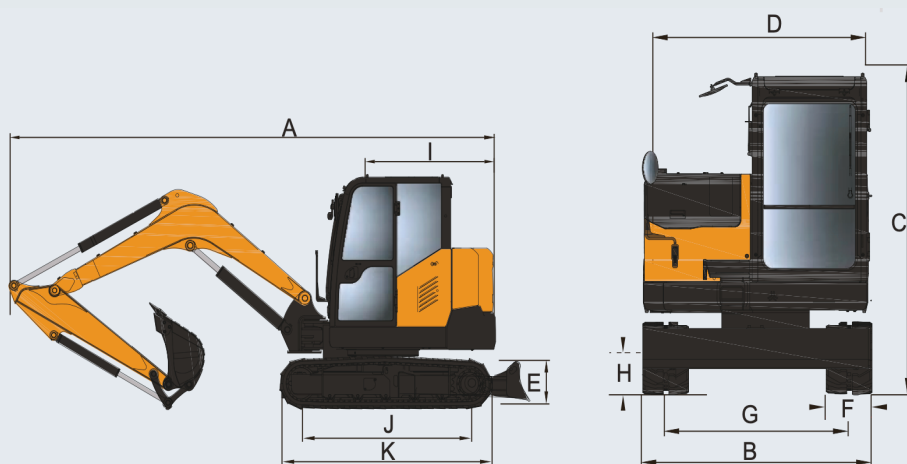
## LIFTING CAPACITIES OF UPPER DOZER BLADE

| Load point height | Radius                      |           |          |      | Max reach |      |
|-------------------|-----------------------------|-----------|----------|------|-----------|------|
|                   | 20 m                        | 30 m      | 40 m     | 50 m | Capacity  |      |
| 4.0 m kg          | 1150 1135                   |           |          |      | 1070      | 1030 |
| 3.0 m kg          | 1250 1100 900 860           |           |          |      | 870       | 835  |
| 2.0 m kg          | 1850 1690 1175 1050 880 840 |           |          |      | 785       | 750  |
| 1.0 m kg          | 1800 1640 1110 995 860 810  |           |          |      | 755       | 715  |
| 0 m kg            | 1740 1570 1070 950 840 790  |           |          |      | 775       | 735  |
| -1.0 m kg         | 2720 2720                   | 1700 1560 | 1050 935 |      | 850       | 810  |
| -2.0 m kg         | 3560 3030                   | 1720 1580 | 1070 955 |      | 1080      | 1020 |



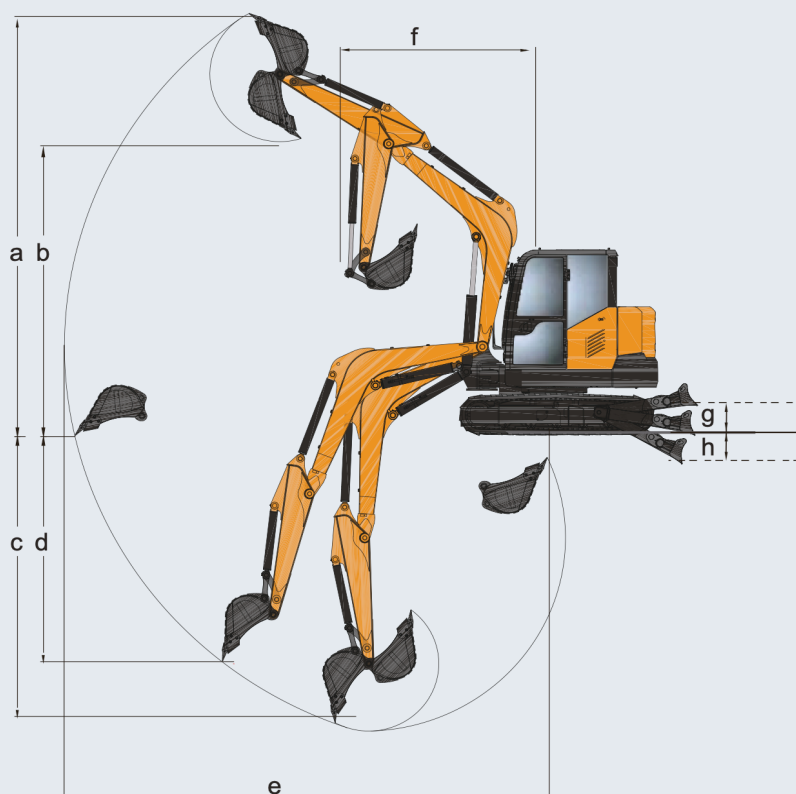
## DIMENSIONS (TRANSPORT)

|   |                             |         |
|---|-----------------------------|---------|
| A | Transport length            | 5830 mm |
| B | Transport width             | 2000 mm |
| C | Transport Height            | 2530 mm |
| D | Upper Structure Width       | 2000 mm |
| E | Blade Height                | 340 mm  |
| F | Track Width (standard shoe) | 400 mm  |
| G | Track Gauge                 | 1600 mm |
| H | Ground Clearance            | 320 mm  |
| I | Tail Swing Radius           | 1350 mm |
| J | Track Length On Ground      | 2055 mm |
| K | Track Length                | 2580 mm |



## WORKING AREA

|   |                                 |         |
|---|---------------------------------|---------|
| A | Max. Digging Height             | 5695 mm |
| B | Max. Dumping Height             | 3970 mm |
| C | Max. Digging Depth              | 3990 mm |
| D | Max Vertical Wall Digging Depth | 3130 mm |
| E | Max. Reach at Ground Level      | 6375 mm |
| F | Min. Swing Radius               | 2730 mm |
| G | Max. Blade Height               | 400 mm  |
| H | Max. Blade Depth                | 385 mm  |





# EQUIPMENT

s = standard / o = optional

| SY60U | ENGINE   |   | UNDERCARRIAGE  |
|-------|--|---|--|
| S     | Yanmar 4TNV98C   | S | Planetary drive with axial piston motors                                 |
| S     | EU Stage V compliant   | S | Propel motor shields   |
| S     | Auto-idle  | S | Spring-applied, hydraulically released automatic propel brake            |
| S     | Dual-element dry air filter  | S | Track guides, front idler and 2 per side                                 |
| S     | Engine air precleaner  | S | 2-speed travel   |
| S     | Coolant Expansion tank   | S | 5 lower track rollers each side  |
| S     | Electronic engine control  | S | 1 upper carrier roller each side   |
| S     | Fan guard  | S | Dozer blade with cylinder guarding                                       |
| S     | Engine coolant to –37 deg. C   | S | Tie downs on track frame and dozer blade                                 |
| S     | Full-flow oil filter   | S | 400mm (16”) wide rubber tracks   |
| S     | High flow cooling fan  | S | Undercarriage frame opening guard  |
| S     | 500-hour engine-oil-change interval  |   | UPPERSTRUCTURE   |
| S     | No scheduled DPF maintenance for 6000 hours  | S | Right-hand, left-hand, and counterweight mirrors                         |
| S     | Fuel filter and water separator  | S | Lockable cab, hood, and service doors                                    |
|       | HYDRAULIC SYSTEM   | S | Debris screen in side panel  |
| S     | Spring-applied, hydraulically released automatic swing brake   | S | Remote-mounted engine oil and fuel filters                               |
| S     | Load sensing hydraulic system  | S | Daily fluid level inspection visible from ground                         |
| S     | Control pattern change valve   | S | Rear reflectors  |
| S     | Primary auxiliary hydraulic circuit with 1 and 2-way combination piping  |   | ATTACHMENTS  |
| S     | Auxiliary hydraulic-flow adjustments through monitor   | S | Convenient grease points   |
| S     | Adjustable auxiliary pressure relief   | S | Centralized lubrication system   |
| S     | Quick coupler ready  | S | Dirt seals on all bucket pins  |
| S     | Case-Drain Line Installed  |   |  |
|       | OPERATOR’S STATION   |   |  |
| S     | Hydraulic pilot controls   |   |  |
| S     | Proportional auxiliary switches on joystick  |   |  |
| S     | Travel levers with foot pedals   |   |  |
| S     | AM/FM radio with bluetooth and USB connection port   |   |  |
| S     | Cell phone tray  |   |  |
| S     | Weight adjustable suspension cloth seat with fore/aft adjustment and adjustable armrests   |   |  |
| S     | 2” seat mounted lap belt   |   |  |
| S     | Emergency stop switch  |   |  |
| S     | Sliding front window   |   |  |
| S     | Removable lower front window   |   |  |
| S     | Window breaker   |   |  |
| S     | ECO mode switch  |   |  |
| S     | 8 tool selection modes   |   |  |
| S     | Fully adjustable auxiliary flow circuits and pressure from display   |   |  |
| S     | Multifunction color LCD monitor with: Diagnostic capability / Multiple-language  |   |  |
| S     | System monitoring features: Auto-idle indicator, 2-speed indicator, work-mode indicator, preheat icon, time and date, battery charge icon, throttle position, engine oil pressure alarm, DPF regeneration inhibit indicator, fuel level gauge, maintenance needed icon, failure code, standard/eco work mode icon, ,engine coolant temperature, coolant temp alarm, severe failure alarm, work tool mode icon, operating hours |   |  |
| S     | High performance heating, ventilation, and air conditioning system   |   |  |
| S     | Operation and maintenance manual storage   |   | ELECTRICAL   |
| S     | Heavy duty removeable rubber floor mat   | S | 12V electrical system  |
| S     | Front windshield wiper with high and low speed   | S | Maintenance free battery   |
| S     | Horn, electric   | S | Ground level battery disconnect  |
| S     | Hour meter, electric   | S | Easy access fuse panel   |
| S     | Hydraulic shutoff lever, all controls  | S | Terminal battery covers  |
| S     | Interior light   | S | 80-amp alternator  |
| S     | Cup holder   | S | 12V power outlet   |
| S     | Travel alarm with cancel switch  |   | LIGHTS   |
| S     | Transparent overhead hatch with retractable sun shade  | S | Work lights: 2 mounted on top of cab, 1 mounted on boom, magnetic beacon |



# A SERVICE YOU CAN RELY ON

In the event of a breakdown during your warranty period, Vertu will come to your site as soon as possible to get your machine back up and running.

## National Service Representation

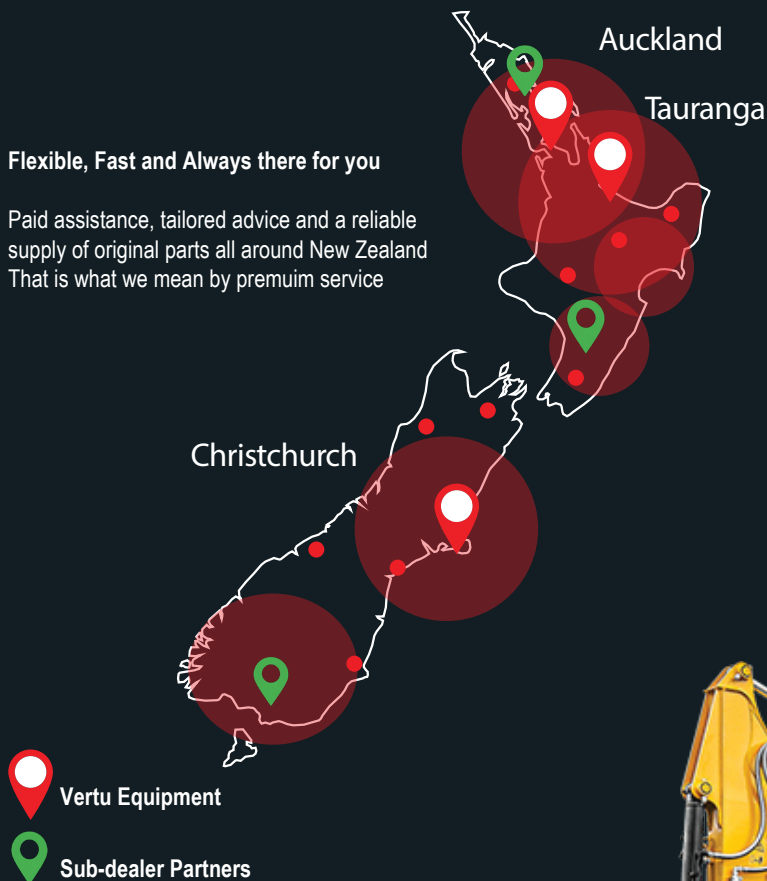
Our national service network partnerships provide certainty that you are supported with service and parts, wherever you are located.

## Parts and Inventory

As the dealer of SANY excavators, roading and construction equipment Vertu holds a significant inventory of SANY Genuine and aftermarket parts and attachments, both in New Zealand and Australia to keep you going. With direct relationships locally and internationally we can source parts quickly and as a matter of priority.

## Flexible, Fast and Always there for you

Paid assistance, tailored advice and a reliable supply of original parts all around New Zealand. That is what we mean by premium service.



## The added benefits SANY offers you:

- + Fast supply thanks to SANY Parts Hub at Vertu Equipment HQ
- + More than 15,000 spare parts to make your machine highly reliable
- + Expert knowledge for optimal supply for your machine
- + Thanks to SANY's special training programme, our dealers are always kept up-to-date so that they can face all technical challenges.

## Detailed information in black and white

Handbooks and documents are available for all SANY mini excavators, and these can help you with operation, maintenance, servicing and repairs. These include operating and maintenance instructions and technical specifications.







# COMPACT POWERHOUSE FOR BIG PERFORMANCE

Urban worksites, road maintenance, and hillside operations demand strength, stability, and precision — and that's exactly where the SY60U excels. With its advanced hydraulic system, dual proportional auxiliary lines, and strong digging performance, it delivers the finesse needed for detailed work while packing the muscle for tougher jobs. Compact, powerful, and built for versatility — the SY60U is your reliable partner on every site.

## ROBUST RELIABILITY

High-quality materials and careful machining guarantee the highest degree of solidity and stability even under stress.

## ALWAYS COMFORTABLE

Whether in the enclosed cab or open canopy, the SY60U is designed with operator comfort at its core. The spacious cockpit features ergonomic controls, a 7-inch smart touchscreen, Bluetooth/USB connectivity, and excellent visibility for confident operation. With reduced cabin noise and intuitive layout, the SY60U helps operators stay focused, comfortable, and productive — all day long.

## SMALL POWERHOUSE

Thanks to its smart, compact design, the SY60U makes light work of tight and complex job sites. Its reduced tail swing and excellent maneuverability allow it to operate confidently in confined urban areas, while maintaining the power and reach needed for larger projects. With compact dimensions and impressive stability, the SY60U delivers big performance where space is limited.

## INHERENTLY SAFE

Maximum safety for the operator, the worksite, and the machine itself comes built into every SY60U. With safety valves on the boom and arm, a rearview camera, and a travel alarm system, the SY60U ensures protection and awareness in every working condition. Robust design and intelligent safety features deliver peace of mind — protecting both people and performance while maintaining the highest level of operational security.

## IMPROVED DETAILS

The extensive standard features and high-quality components from trusted global manufacturers make the SY60U a dependable powerhouse for every application. Equipped with advanced hydraulics, dual proportional auxiliary lines, a 7-inch smart display, and reliable Yanmar power, the SY60U combines proven durability with modern innovation — making it a truly versatile all-rounder on any job site.

## TECHNICAL HIGHLIGHTS

|                     |                      |
|---------------------|----------------------|
| Engine              | YANMAR 4TNV98C       |
| Gross power         | 42.4 kW              |
| Max. Hydraulic Flow | 148 L/min            |
| Max. travel speed   | 3.8 km/h             |
| Swingspeed          | 10 rpm               |
| Mainpump            | Rexroth Axial Piston |
| Operating Weight    | 6300 kg              |



Not all products are available in all markets. As part of our continuous improvement process, we reserve the right to modify specifications and designs without giving prior notice. The figures may contain additional options.



Machinery Specialists  
06 356 8459  
[www.machineryspecialists.co.nz](http://www.machineryspecialists.co.nz)  
[info@machineryspecialists.co.nz](mailto:info@machineryspecialists.co.nz)

18 Bisley Street  
Palmerston North

**MACHINERY  
SPECIALISTS  
LIMITED**